

Product datasheet for **TA316504**

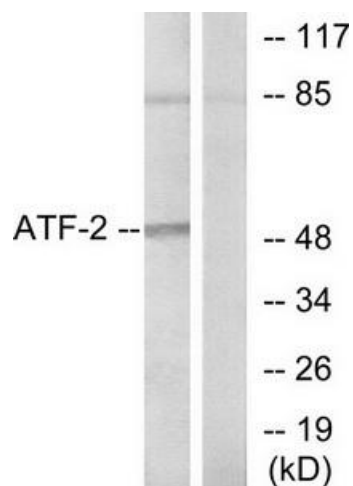
ATF2 Rabbit Polyclonal Antibody

Product data:

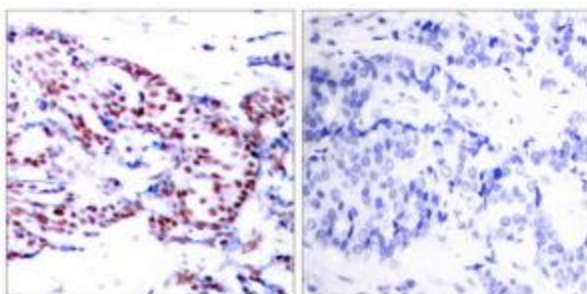
Product Type:	Primary Antibodies
Applications:	IHC, WB
Recommended Dilution:	WB: 1:500~1:3000, IHC: 1:50~1:100, ELISA: 1:20000, IP: Various Dilution
Reactivity:	Human, Mouse, Rat
Host:	Rabbit
Isotype:	IgG
Clonality:	Polyclonal
Immunogen:	The antiserum was produced against synthesized non-phosphopeptide derived from human ATF-2 around the phosphorylation site of Threonine 71 or 53.
Formulation:	Rabbit IgG in phosphate buffered saline (without Mg ²⁺ and Ca ²⁺), pH 7.4, 150mM NaCl, 0.02% sodium azide and 50% glycerol.
Concentration:	lot specific
Purification:	The antibody was affinity-purified from rabbit antiserum by affinity-chromatography using epitope-specific immunogen.
Conjugation:	Unconjugated
Storage:	Store at -20°C as received.
Stability:	Stable for 12 months from date of receipt.
Gene Name:	activating transcription factor 2
Database Link:	NP_001871 Entrez Gene 11909 Mouse Entrez Gene 81647 Rat Entrez Gene 1386 Human P15336
Synonyms:	CRE-BP1; CREB-2; CREB2; HB16; TREB7
Note:	ATF-2(Ab-71 or 53) Antibody detects endogenous levels of ATF-2 protein around Threonine 71 or 53.
Protein Families:	Druggable Genome, Transcription Factors
Protein Pathways:	MAPK signaling pathway



[View online »](#)

Product images:

Western blot analysis of extracts from HeLa cells, using ATF2 (Ab-71 or 53) Antibody. The lane on the right is treated with the synthesized peptide.



Immunohistochemistry analysis of paraffin-embedded human breast carcinoma tissue, using ATF2 (Ab-71 or 53) Antibody. The picture on the right is treated with the synthesized peptide.