

Product datasheet for **TA316502**

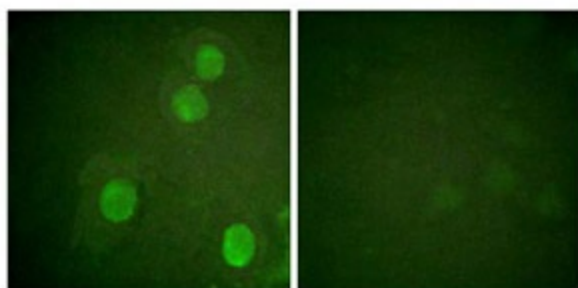
H4-16 Rabbit Polyclonal Antibody

Product data:

Product Type:	Primary Antibodies
Applications:	IF
Recommended Dilution:	IF: 1:100~1:500, ELISA: 1:5000
Reactivity:	Human
Modifications:	Phospho-specific
Host:	Rabbit
Isotype:	IgG
Clonality:	Polyclonal
Immunogen:	The antibody was affinity-purified from rabbit antiserum by affinity-chromatography using epitope-specific phosphopeptide. The antibody against non-phosphopeptide was removed by chromatography using non-phosphopeptide corresponding to the phosphorylation site.
Formulation:	Rabbit IgG in phosphate buffered saline (without Mg ²⁺ and Ca ²⁺), pH 7.4, 150mM NaCl, 0.02% sodium azide and 50% glycerol.
Concentration:	lot specific
Purification:	The antibody was affinity-purified from rabbit antiserum by affinity-chromatography using epitope-specific immunogen.
Conjugation:	Unconjugated
Storage:	Store at -20°C as received.
Stability:	Stable for 12 months from date of receipt.
Gene Name:	histone cluster 4, H4
Database Link:	NP_778224 Entrez Gene 121504 Human P62805
Synonyms:	H4; p
Note:	Histone H4 (Phospho-Ser47) antibody detects endogenous levels of Histone H4 only when phosphorylated at serine 47.
Protein Pathways:	Systemic lupus erythematosus



[View online »](#)

Product images:

P-peptide

-

+

Immunocytochemistry/ Immunofluorescence - Histone H4 (phospho S47) antibody. Immunofluorescence analysis of HuvEc cells, using Histone H4 (phospho S47) antibody at 1/500 - 1/1000 dilution, in the presence (right panel) or absence (left panel) of phosphopeptide.