

## Product datasheet for **TA316500**

### Ryanodine receptor 2 (RYR2) Rabbit Polyclonal Antibody

#### Product data:

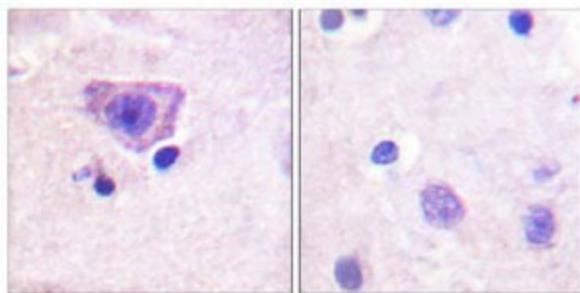
Product Type:	Primary Antibodies
Applications:	IHC
Recommended Dilution:	IHC: 1:50~1:100, ELISA: 1:1000
Reactivity:	Human
Modifications:	Phospho-specific
Host:	Rabbit
Isotype:	IgG
Clonality:	Polyclonal
Immunogen:	The antibody was affinity-purified from rabbit antiserum by affinity-chromatography using epitope-specific phosphopeptide. The antibody against non-phosphopeptide was removed by chromatography using non-phosphopeptide corresponding to the phosphorylation site.
Formulation:	Rabbit IgG in phosphate buffered saline (without Mg <sup>2+</sup> and Ca <sup>2+</sup> ), pH 7.4, 150mM NaCl, 0.02% sodium azide and 50% glycerol.
Concentration:	lot specific
Purification:	The antibody was affinity-purified from rabbit antiserum by affinity-chromatography using epitope-specific immunogen.
Conjugation:	Unconjugated
Storage:	Store at -20°C as received.
Stability:	Stable for 12 months from date of receipt.
Gene Name:	ryanodine receptor 2
Database Link:	<a href="#">NP_001026</a> <a href="#">Entrez Gene 6262 Human</a> <a href="#">Q92736</a>
Synonyms:	ARVC2; ARVD2; RyR; RYR-2; VTSIP
Note:	RyR2 (Phospho-Ser2808) antibody detects endogenous levels of RyR2 only when phosphorylated at serine 2808.
Protein Families:	Druggable Genome, Transmembrane



[View online »](#)

**Protein Pathways:** Arrhythmogenic right ventricular cardiomyopathy (ARVC), Calcium signaling pathway, Cardiac muscle contraction, Dilated cardiomyopathy, Hypertrophic cardiomyopathy (HCM)

**Product images:**



P-peptide

-

+

Immunohistochemistry (Paraffin-embedded sections) - Ryanodine Receptor (phospho S2808) antibody. The antibody (1/50 dilution) staining Ryanodine Receptor in human brain tissue by Immunohistochemistry (Paraffin section); in the absence (left) or presence (right) of the immunizing peptide.