

Product datasheet for **TA316498**

NFAT4 (NFATC3) Rabbit Polyclonal Antibody

Product data:

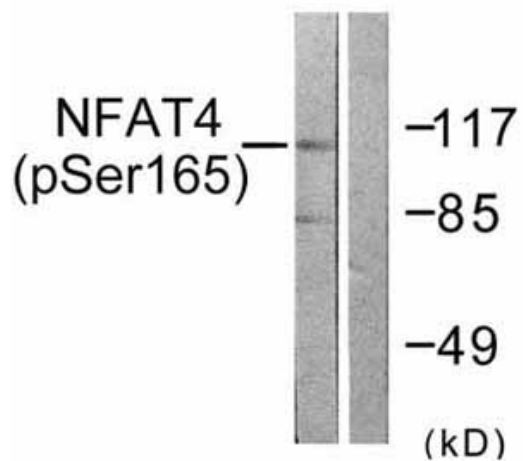
Product Type:	Primary Antibodies
Applications:	IF, WB
Recommended Dilution:	WB: 1:500~1:3000, IF: 1:100~1:500, ELISA: 1:1000
Reactivity:	Human
Modifications:	Phospho-specific
Host:	Rabbit
Isotype:	IgG
Clonality:	Polyclonal
Immunogen:	The antibody was affinity-purified from rabbit antiserum by affinity-chromatography using epitope-specific phosphopeptide. The antibody against non-phosphopeptide was removed by chromatography using non-phosphopeptide corresponding to the phosphorylation site.
Formulation:	Rabbit IgG in phosphate buffered saline (without Mg ²⁺ and Ca ²⁺), pH 7.4, 150mM NaCl, 0.02% sodium azide and 50% glycerol.
Concentration:	lot specific
Purification:	The antibody was affinity-purified from rabbit antiserum by affinity-chromatography using epitope-specific immunogen.
Conjugation:	Unconjugated
Storage:	Store at -20°C as received.
Stability:	Stable for 12 months from date of receipt.
Gene Name:	nuclear factor of activated T-cells 3
Database Link:	NP_004546 Entrez Gene 4775 Human Q12968
Synonyms:	NFAT4; NFATX
Note:	NFAT4 (Phospho-Ser165) antibody detects endogenous levels of NFAT4 only when phosphorylated at serine 165.
Protein Families:	Druggable Genome, Transcription Factors



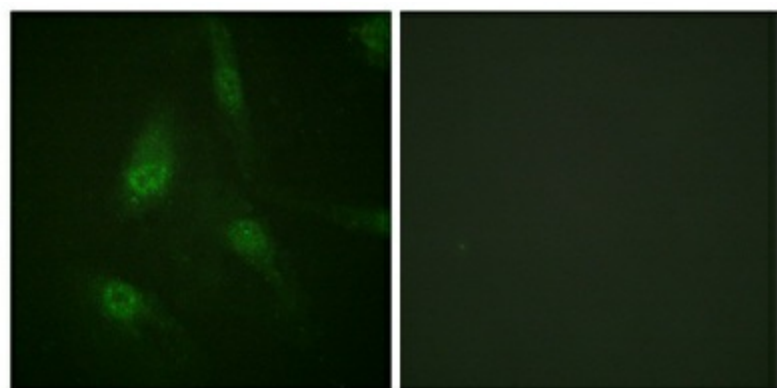
[View online »](#)

Protein Pathways: Axon guidance, B cell receptor signaling pathway, Natural killer cell mediated cytotoxicity, T cell receptor signaling pathway, VEGF signaling pathway, Wnt signaling pathway

Product images:



Western blot - NFAT4 (phospho S165) antibody. All lanes : Anti-NFAT4 (phospho S165) antibody at 1/500 dilution. Lane 1 : HeLa cells treated with calcium (40nM, 30 mins). Lane 2 : HeLa cells treated with calcium (40nM, 30 mins) with immunizing phosphopeptide. Predicted band size : 116 kDa. Observed band size : 116 kDa.



Immunofluorescence analysis of HeLa cells, using NFAT4 (Phospho-Ser165) antibody. Left: without immunizing phosphopeptide; Right: with immunizing phosphopeptide.