

## Product datasheet for **TA316497**

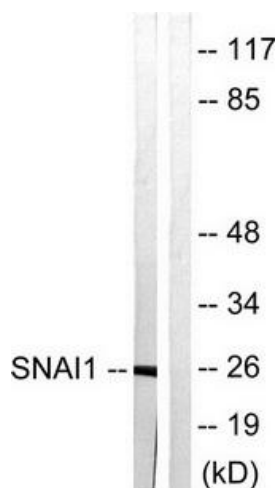
### SNAIL (SNAI1) Rabbit Polyclonal Antibody

#### Product data:

Product Type:	Primary Antibodies
Applications:	WB
Recommended Dilution:	WB: 1:500~1:3000, ELISA: 1:1000
Reactivity:	Human, Mouse
Host:	Rabbit
Isotype:	IgG
Clonality:	Polyclonal
Immunogen:	The antiserum was produced against synthesized non-phosphopeptide derived from human SNAI1 around the phosphorylation site of serine 246 (T-F-SP-R-M)
Formulation:	Rabbit IgG in phosphate buffered saline (without Mg <sup>2+</sup> and Ca <sup>2+</sup> ), pH 7.4, 150mM NaCl, 0.02% sodium azide and 50% glycerol.
Concentration:	lot specific
Purification:	The antibody was affinity-purified from rabbit antiserum by affinity-chromatography using epitope-specific immunogen.
Conjugation:	Unconjugated
Storage:	Store at -20°C as received.
Stability:	Stable for 12 months from date of receipt.
Gene Name:	snail family transcriptional repressor 1
Database Link:	<a href="#">NP_005976</a> <a href="#">Entrez Gene 20613 Mouse</a> <a href="#">Entrez Gene 6615 Human</a> <a href="#">O95863</a>
Synonyms:	dj710H13.1; SLUGH2; SNA; SNAH; SNAIL; SNAIL1
Note:	SNAI1 antibody detects endogenous levels of total SNAI1 protein.
Protein Families:	Druggable Genome
Protein Pathways:	Adherens junction



[View online »](#)

**Product images:**

Western blot analysis of extracts from HT29 cells, using SNAI1 (Ab-246) antibody. The lane on the right is treated with the synthesized peptide.