

Product datasheet for **TA316490**

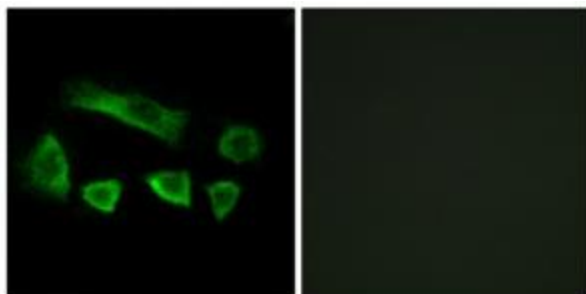
NT5C1B (NT5C1B-RDH14) Rabbit Polyclonal Antibody

Product data:

| | |
|-----------------------|--|
| Product Type: | Primary Antibodies |
| Applications: | IF |
| Recommended Dilution: | IF: 1:100~1:500, ELISA: 1:20000 |
| Reactivity: | Human |
| Host: | Rabbit |
| Isotype: | IgG |
| Clonality: | Polyclonal |
| Immunogen: | The antiserum was produced against synthesized peptide derived from internal of human NT5C1B. |
| Formulation: | Phosphate buffered saline (without Mg ²⁺ and Ca ²⁺), pH 7.4, 150mM NaCl, 0.02% sodium azide and 50% glycerol. |
| Concentration: | lot specific |
| Purification: | The antibody was affinity-purified from rabbit antiserum by affinity-chromatography using epitope-specific immunogen. |
| Conjugation: | Unconjugated |
| Storage: | Store at -20°C as received. |
| Stability: | Stable for 12 months from date of receipt. |
| Gene Name: | NT5C1B-RDH14 readthrough |
| Database Link: | NP_001186032 Entrez Gene 100526794 Human Q96P26 |
| Synonyms: | FLJ32882; FLJ97601 |
| Note: | NT5C1B antibody detects endogenous levels of total NT5C1B protein. |



[View online »](#)

Product images:

Immunofluorescence analysis of A549 cells, using NT5C1B antibody. The picture on the right is treated with the synthesized peptide.