

Product datasheet for **TA316484**

CDK11A Rabbit Polyclonal Antibody

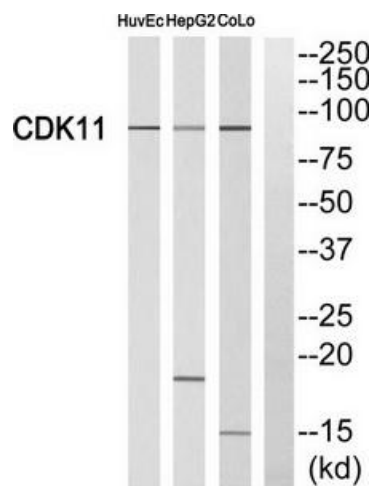
Product data:

Product Type:	Primary Antibodies
Applications:	WB
Recommended Dilution:	WB: 1:500~1:3000, ELISA: 1:10000
Reactivity:	Human
Host:	Rabbit
Isotype:	IgG
Clonality:	Polyclonal
Immunogen:	The antiserum was produced against synthesized peptide derived from internal of human CDK11.
Formulation:	Phosphate buffered saline (without Mg ²⁺ and Ca ²⁺), pH 7.4, 150mM NaCl, 0.02% sodium azide and 50% glycerol.
Concentration:	lot specific
Purification:	The antibody was affinity-purified from rabbit antiserum by affinity-chromatography using epitope-specific immunogen.
Conjugation:	Unconjugated
Storage:	Store at -20°C as received.
Stability:	Stable for 12 months from date of receipt.
Gene Name:	cyclin-dependent kinase 11A
Database Link:	NP_076916 Entrez Gene 728642 Human Q9UQ88
Synonyms:	CDC2L2; CDC2L3; CDK11-p46; CDK11-p58; CDK11-p110; p58GTA; PITSLRE
Note:	CDK11 antibody detects endogenous levels of total CDK11 protein.
Protein Families:	Druggable Genome



[View online »](#)

Product images:



Western blot analysis of extracts from HUVEC cells, HepG2 cells and CoLo cells, using CDK11 antibody. The lane on the right is treated with the synthesized peptide.