

Product datasheet for **TA316482**

Nkx2.4 (NKX2-4) Rabbit Polyclonal Antibody

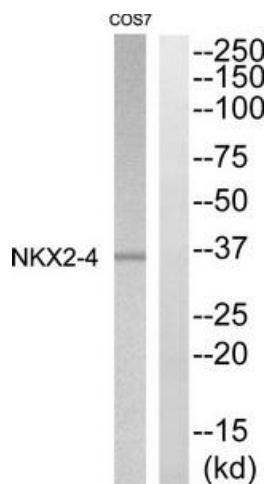
Product data:

Product Type:	Primary Antibodies
Applications:	WB
Recommended Dilution:	WB: 1:500~1:3000, ELISA: 1:10000
Reactivity:	Human, Mouse
Host:	Rabbit
Isotype:	IgG
Clonality:	Polyclonal
Immunogen:	The antiserum was produced against synthesized peptide derived from C-terminal of human NKX2-4.
Formulation:	Phosphate buffered saline (without Mg ²⁺ and Ca ²⁺), pH 7.4, 150mM NaCl, 0.02% sodium azide and 50% glycerol.
Concentration:	lot specific
Purification:	The antibody was affinity-purified from rabbit antiserum by affinity-chromatography using epitope-specific immunogen.
Conjugation:	Unconjugated
Storage:	Store at -20°C as received.
Stability:	Stable for 12 months from date of receipt.
Gene Name:	NK2 homeobox 4
Database Link:	NP_149416 Entrez Gene 228731 Mouse Entrez Gene 644524 Human Q9H2Z4
Synonyms:	NKX2.4; NKX2D
Note:	NKX2-4 Antibody detects endogenous levels of total NKX2-4 protein.



[View online »](#)

Product images:



Western blot analysis of extracts from COS-7 cells, using NKX2-4 Antibody. The lane on the right is treated with the synthesized peptide.