

Product datasheet for **TA316473**

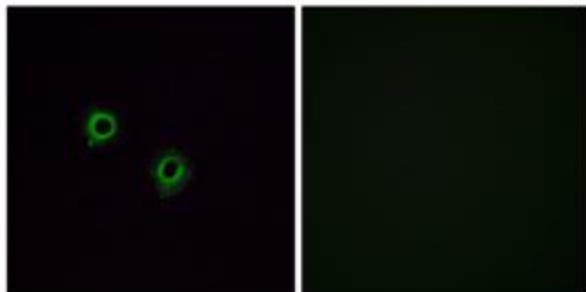
OR2J3 Rabbit Polyclonal Antibody

Product data:

Product Type:	Primary Antibodies
Applications:	IF
Recommended Dilution:	IF: 1:100~1:500, ELISA: 1:20000
Reactivity:	Human
Host:	Rabbit
Isotype:	IgG
Clonality:	Polyclonal
Immunogen:	The antiserum was produced against synthesized peptide derived from internal of human OR2J3.
Formulation:	Phosphate buffered saline (without Mg ²⁺ and Ca ²⁺), pH 7.4, 150mM NaCl, 0.02% sodium azide and 50% glycerol.
Concentration:	lot specific
Purification:	The antibody was affinity-purified from rabbit antiserum by affinity-chromatography using epitope-specific immunogen.
Conjugation:	Unconjugated
Storage:	Store at -20°C as received.
Stability:	Stable for 12 months from date of receipt.
Gene Name:	olfactory receptor family 2 subfamily J member 3
Database Link:	NP_001005216 Entrez Gene 442186 Human O76001
Synonyms:	6M1-3; C3HEXS; HS6M1-3; OR6-6; OR6-16; OR6.3.6; ORL671
Note:	OR2J3 antibody detects endogenous levels of total OR2J3 protein.
Protein Families:	Transmembrane
Protein Pathways:	Olfactory transduction



[View online »](#)

Product images:

Immunofluorescence analysis of A549 cells, using OR2J3 antibody. The picture on the right is treated with the synthesized peptide.