

Product datasheet for **TA316465**

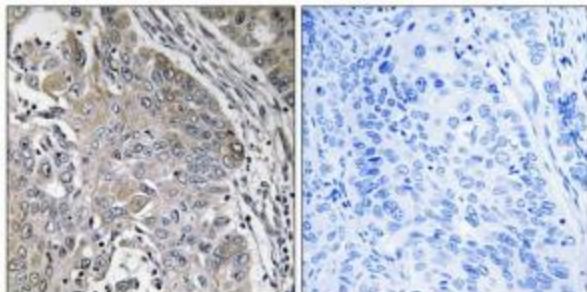
SPINK6 Rabbit Polyclonal Antibody

Product data:

Product Type:	Primary Antibodies
Applications:	IHC
Recommended Dilution:	IHC: 1:50~1:100, ELISA: 1:40000, References:
Reactivity:	Human
Host:	Rabbit
Isotype:	IgG
Clonality:	Polyclonal
Immunogen:	The antiserum was produced against synthesized peptide derived from internal of human SPINK6.
Formulation:	Phosphate buffered saline (without Mg ²⁺ and Ca ²⁺), pH 7.4, 150mM NaCl, 0.02% sodium azide and 50% glycerol.
Concentration:	lot specific
Purification:	The antibody was affinity-purified from rabbit antiserum by affinity-chromatography using epitope-specific immunogen.
Conjugation:	Unconjugated
Storage:	Store at -20°C as received.
Stability:	Stable for 12 months from date of receipt.
Gene Name:	serine peptidase inhibitor, Kazal type 6
Database Link:	NP_995313 Entrez Gene 404203 Human Q6UWN8
Synonyms:	BUSI2; UNQ844
Note:	SPINK6 antibody detects endogenous levels of total SPINK6 protein.
Protein Families:	Secreted Protein, Transmembrane



[View online »](#)

Product images:

Immunohistochemistry analysis of paraffin-embedded human lung carcinoma tissue using SPINK6 antibody. The picture on the right is treated with the synthesized peptide.