

Product datasheet for **TA316457**

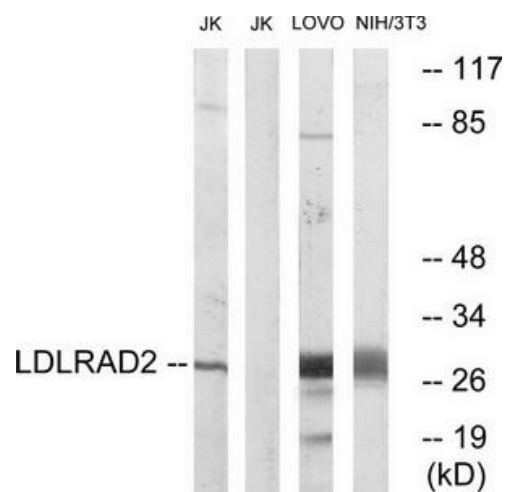
LDLRAD2 Rabbit Polyclonal Antibody

Product data:

Product Type:	Primary Antibodies
Applications:	WB
Recommended Dilution:	WB: 1:500~1:3000, ELISA: 1:20000
Reactivity:	Human
Host:	Rabbit
Isotype:	IgG
Clonality:	Polyclonal
Immunogen:	The antiserum was produced against synthesized peptide derived from internal of human LDLRAD2.
Formulation:	Phosphate buffered saline (without Mg ²⁺ and Ca ²⁺), pH 7.4, 150mM NaCl, 0.02% sodium azide and 50% glycerol.
Concentration:	lot specific
Purification:	The antibody was affinity-purified from rabbit antiserum by affinity-chromatography using epitope-specific immunogen.
Conjugation:	Unconjugated
Storage:	Store at -20°C as received.
Stability:	Stable for 12 months from date of receipt.
Gene Name:	low density lipoprotein receptor class A domain containing 2
Database Link:	NP_001013715 Entrez Gene 401944 Human Q5SZ11
Synonyms:	low density lipoprotein receptor A domain containing 2; low density lipoprotein receptor class A domain containing 2; OTTHUMP00000002767
Note:	LDLRAD2 antibody detects endogenous levels of total LDLRAD2 protein.
Protein Families:	Druggable Genome

[View online »](#)

Product images:



Western blot analysis of extracts from Jurkat cells, LOVO cells and 3T3 using LDLRAD2 antibody. The lane on the right is treated with the synthesized peptide.