

Product datasheet for **TA316456**

OR51A2 Rabbit Polyclonal Antibody

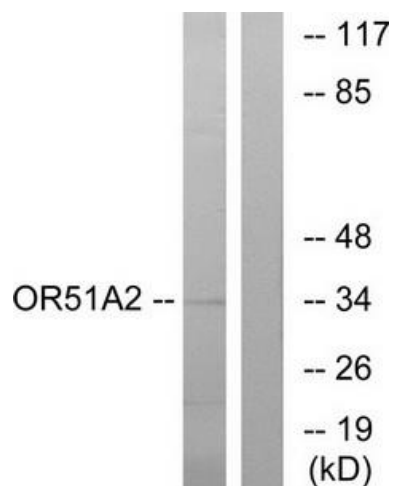
Product data:

Product Type:	Primary Antibodies
Applications:	IF, WB
Recommended Dilution:	WB: 1:500~1:3000, IF: 1:100~1:500, ELISA: 1:20000
Reactivity:	Human
Host:	Rabbit
Isotype:	IgG
Clonality:	Polyclonal
Immunogen:	The antiserum was produced against synthesized peptide derived from internal of human OR51A2.
Formulation:	Phosphate buffered saline (without Mg ²⁺ and Ca ²⁺), pH 7.4, 150mM NaCl, 0.02% sodium azide and 50% glycerol.
Concentration:	lot specific
Purification:	The antibody was affinity-purified from rabbit antiserum by affinity-chromatography using epitope-specific immunogen.
Conjugation:	Unconjugated
Storage:	Store at -20°C as received.
Stability:	Stable for 12 months from date of receipt.
Gene Name:	olfactory receptor family 51 subfamily A member 2
Database Link:	NP_001004748 Entrez Gene 401667 Human Q8NGJ7
Synonyms:	family 51; member 2; olfactory receptor; OTTHUMP00000069569; subfamily A
Note:	OR51A2 antibody detects endogenous levels of total OR51A2 protein.
Protein Families:	Transmembrane
Protein Pathways:	Olfactory transduction

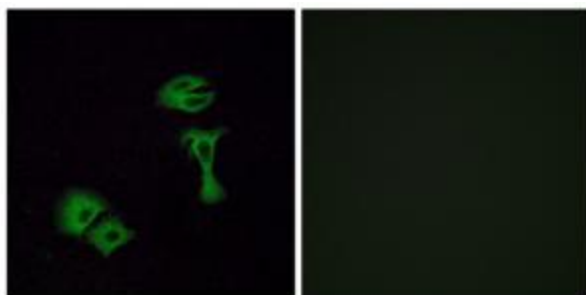


[View online »](#)

Product images:



Western blot analysis of extracts from K562 cells, using OR51A2 antibody. The lane on the right is treated with the synthesized peptide.



Immunofluorescence analysis of A549 cells, using OR51A2 antibody. The picture on the right is treated with the synthesized peptide.