

Product datasheet for **TA316443**

OR7A10 Rabbit Polyclonal Antibody

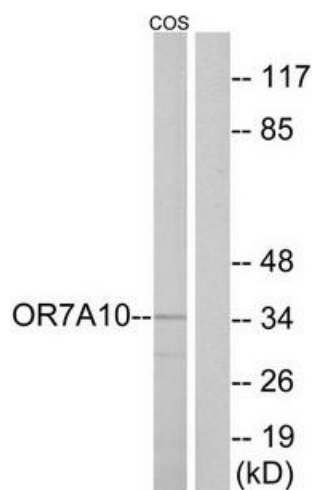
Product data:

Product Type:	Primary Antibodies
Applications:	WB
Recommended Dilution:	WB: 1:500~1:3000, ELISA: 1:10000
Reactivity:	Human
Host:	Rabbit
Isotype:	IgG
Clonality:	Polyclonal
Immunogen:	The antiserum was produced against synthesized peptide derived from C-terminal of human OR7A10.
Formulation:	Phosphate buffered saline (without Mg ²⁺ and Ca ²⁺), pH 7.4, 150mM NaCl, 0.02% sodium azide and 50% glycerol.
Concentration:	lot specific
Purification:	The antibody was affinity-purified from rabbit antiserum by affinity-chromatography using epitope-specific immunogen.
Conjugation:	Unconjugated
Storage:	Store at -20°C as received.
Stability:	Stable for 12 months from date of receipt.
Gene Name:	olfactory receptor family 7 subfamily A member 10
Database Link:	NP_001005190 Entrez Gene 390892 Human O76100
Synonyms:	BC85395_3; OR19-18
Note:	OR7A10 antibody detects endogenous levels of total OR7A10 protein.
Protein Families:	Transmembrane
Protein Pathways:	Olfactory transduction



[View online »](#)

Product images:



Western blot analysis of extracts from COS-7 cells, using OR7A10 antibody. The lane on the right is treated with the synthesized peptide.