

## Product datasheet for **TA316433**

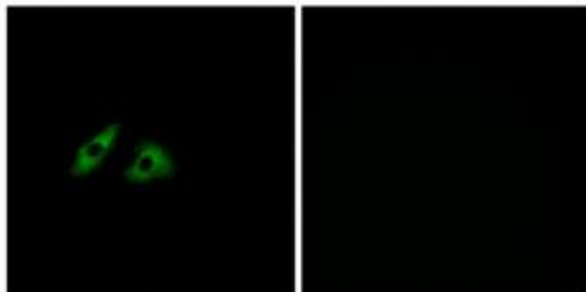
### GPR152 Rabbit Polyclonal Antibody

#### Product data:

Product Type:	Primary Antibodies
Applications:	IF
Recommended Dilution:	IF: 1:100~1:500, ELISA: 1:1000
Reactivity:	Human
Host:	Rabbit
Isotype:	IgG
Clonality:	Polyclonal
Immunogen:	The antiserum was produced against synthesized peptide derived from internal of human GPR152.
Formulation:	Phosphate buffered saline (without Mg <sup>2+</sup> and Ca <sup>2+</sup> ), pH 7.4, 150mM NaCl, 0.02% sodium azide and 50% glycerol.
Concentration:	lot specific
Purification:	The antibody was affinity-purified from rabbit antiserum by affinity-chromatography using epitope-specific immunogen.
Conjugation:	Unconjugated
Storage:	Store at -20°C as received.
Stability:	Stable for 12 months from date of receipt.
Gene Name:	G protein-coupled receptor 152
Database Link:	<a href="#">NP_996880</a> <a href="#">Entrez Gene 390212 Human</a> <a href="#">Q8TDT2</a>
Synonyms:	PGR5
Note:	GPR152 antibody detects endogenous levels of total GPR152 protein.
Protein Families:	Druggable Genome, Transmembrane



[View online »](#)

**Product images:**

Immunofluorescence analysis of HeLa cells, using GPR152 antibody. The picture on the right is treated with the synthesized peptide.