

## Product datasheet for **TA316421**

### OR5W2 Rabbit Polyclonal Antibody

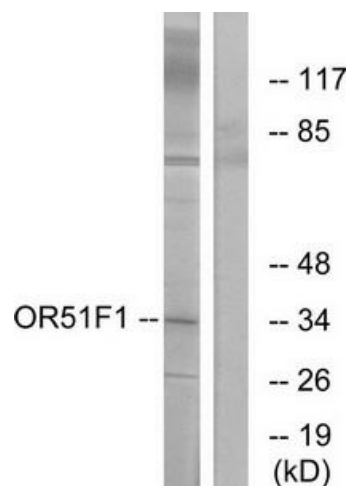
#### Product data:

Product Type:	Primary Antibodies
Applications:	IF, WB
Recommended Dilution:	WB: 1:500~1:3000, IF: 1:100~1:500, ELISA: 1:10000
Reactivity:	Human
Host:	Rabbit
Isotype:	IgG
Clonality:	Polyclonal
Immunogen:	The antiserum was produced against synthesized peptide derived from C-terminal of human OR51F1.
Formulation:	Phosphate buffered saline (without Mg <sup>2+</sup> and Ca <sup>2+</sup> ), pH 7.4, 150mM NaCl, 0.02% sodium azide and 50% glycerol.
Concentration:	lot specific
Purification:	The antibody was affinity-purified from rabbit antiserum by affinity-chromatography using epitope-specific immunogen.
Conjugation:	Unconjugated
Storage:	Store at -20°C as received.
Stability:	Stable for 12 months from date of receipt.
Gene Name:	olfactory receptor family 5 subfamily W member 2
Database Link:	<a href="#">NP_001001960</a> <a href="#">Entrez Gene 390148 Human</a> <a href="#">Q8NH69</a>
Synonyms:	OR5W2P; OR5W3P
Note:	OR51F1 antibody detects endogenous levels of total OR51F1 protein.
Protein Families:	Transmembrane

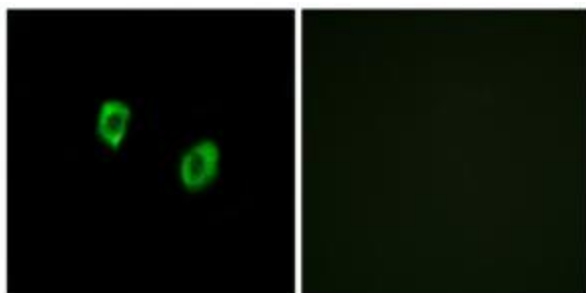


[View online »](#)

## Product images:



Western blot analysis of extracts from K562 cells, using OR51F1 antibody. The lane on the right is treated with the synthesized peptide.



Immunofluorescence analysis of COS-7 cells, using OR51F1 antibody. The picture on the right is treated with the synthesized peptide.