

Product datasheet for **TA316420**

OR5W2 Rabbit Polyclonal Antibody

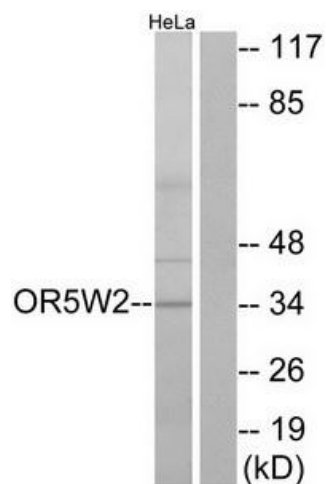
Product data:

| | |
|-----------------------|--|
| Product Type: | Primary Antibodies |
| Applications: | IF, WB |
| Recommended Dilution: | WB: 1:500~1:3000, IF: 1:100~1:500, ELISA: 1:20000 |
| Reactivity: | Human |
| Host: | Rabbit |
| Isotype: | IgG |
| Clonality: | Polyclonal |
| Immunogen: | The antiserum was produced against synthesized peptide derived from internal of human OR5W2. |
| Formulation: | Phosphate buffered saline (without Mg ²⁺ and Ca ²⁺), pH 7.4, 150mM NaCl, 0.02% sodium azide and 50% glycerol. |
| Concentration: | lot specific |
| Purification: | The antibody was affinity-purified from rabbit antiserum by affinity-chromatography using epitope-specific immunogen. |
| Conjugation: | Unconjugated |
| Storage: | Store at -20°C as received. |
| Stability: | Stable for 12 months from date of receipt. |
| Gene Name: | olfactory receptor family 5 subfamily W member 2 |
| Database Link: | NP_001001960 Entrez Gene 390148 Human Q8NH69 |
| Synonyms: | OR5W2P; OR5W3P |
| Note: | OR5W2 antibody detects endogenous levels of total OR5W2 protein. |
| Protein Families: | Transmembrane |

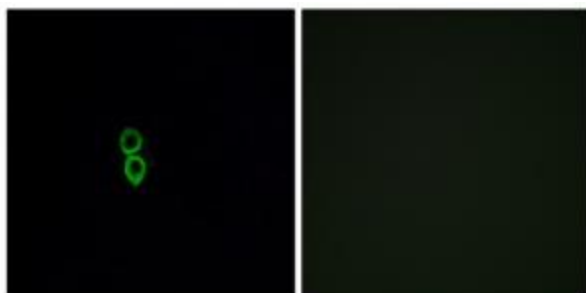


[View online »](#)

Product images:



Western blot analysis of extracts from HeLa cells, using OR5W2 antibody. The lane on the right is treated with the synthesized peptide.



Immunofluorescence analysis of A549 cells, using OR5W2 antibody. The picture on the right is treated with the synthesized peptide.