

## Product datasheet for **TA316417**

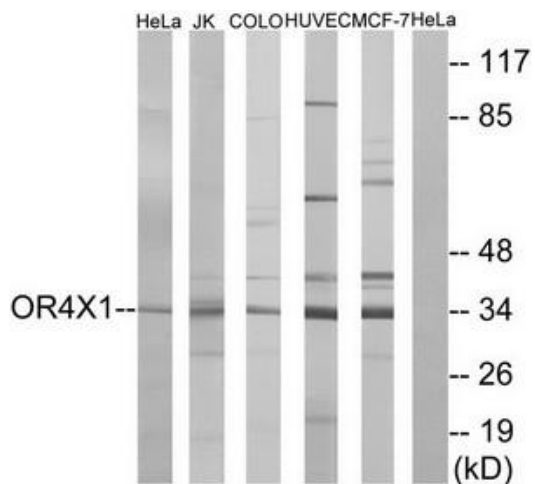
### OR4X1 Rabbit Polyclonal Antibody

#### Product data:

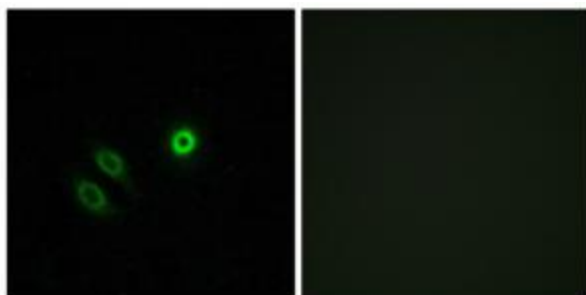
Product Type:	Primary Antibodies
Applications:	IF, WB
Recommended Dilution:	WB: 1:500~1:3000, IF: 1:100~1:500, ELISA: 1:20000
Reactivity:	Human
Host:	Rabbit
Isotype:	IgG
Clonality:	Polyclonal
Immunogen:	The antiserum was produced against synthesized peptide derived from C-terminal of human OR4X1.
Formulation:	Phosphate buffered saline (without Mg <sup>2+</sup> and Ca <sup>2+</sup> ), pH 7.4, 150mM NaCl, 0.02% sodium azide and 50% glycerol.
Concentration:	lot specific
Purification:	The antibody was affinity-purified from rabbit antiserum by affinity-chromatography using epitope-specific immunogen.
Conjugation:	Unconjugated
Storage:	Store at -20°C as received.
Stability:	Stable for 12 months from date of receipt.
Gene Name:	olfactory receptor family 4 subfamily X member 1 (gene/pseudogene)
Database Link:	<a href="#">NP_001004726</a> <a href="#">Entrez Gene 390113 Human</a> <a href="#">Q8NH49</a>
Synonyms:	OR11-104
Note:	OR4X1 antibody detects endogenous levels of total OR4X1 protein.
Protein Families:	Transmembrane
Protein Pathways:	Olfactory transduction



[View online »](#)

**Product images:**


Western blot analysis of extracts from HeLa cells, Jurkat cells, COLO cells, HUVEC cells and MCF-7 cells, using OR4X1 antibody. The lane on the right is treated with the synthesized peptide.



Immunofluorescence analysis of A549 cells, using OR4X1 antibody. The picture on the right is treated with the synthesized peptide.