

## Product datasheet for **TA316399**

### GPR 153 (GPR153) Rabbit Polyclonal Antibody

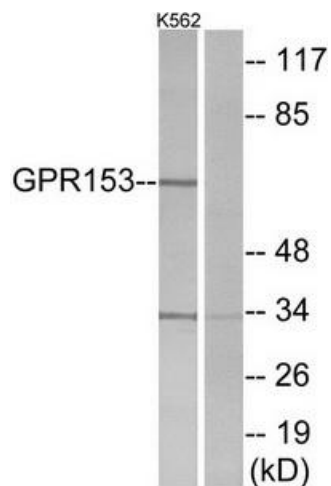
#### Product data:

Product Type:	Primary Antibodies
Applications:	IF, WB
Recommended Dilution:	WB: 1:500~1:3000, IF: 1:100~1:500, ELISA: 1:5000
Reactivity:	Human, Mouse, Rat
Host:	Rabbit
Isotype:	IgG
Clonality:	Polyclonal
Immunogen:	The antiserum was produced against synthesized peptide derived from internal of human GPR153.
Formulation:	Phosphate buffered saline (without Mg <sup>2+</sup> and Ca <sup>2+</sup> ), pH 7.4, 150mM NaCl, 0.02% sodium azide and 50% glycerol.
Concentration:	lot specific
Purification:	The antibody was affinity-purified from rabbit antiserum by affinity-chromatography using epitope-specific immunogen.
Conjugation:	Unconjugated
Storage:	Store at -20°C as received.
Stability:	Stable for 12 months from date of receipt.
Gene Name:	G protein-coupled receptor 153
Database Link:	<a href="#">NP_997253</a> <a href="#">Entrez Gene 100129 Mouse</a> <a href="#">Entrez Gene 619550 Rat</a> <a href="#">Entrez Gene 387509 Human</a> <a href="#">Q6NV75</a>
Synonyms:	PGR1
Note:	GPR153 antibody detects endogenous levels of total GPR153 protein.
Protein Families:	Druggable Genome, Transmembrane

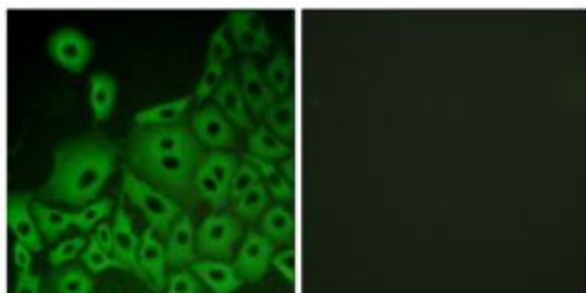


[View online »](#)

## Product images:



Western blot analysis of extracts from K562 cells, using GPR153 antibody. The lane on the right is treated with the synthesized peptide.



Immunofluorescence analysis of A549 cells, using GPR153 antibody. The picture on the right is treated with the synthesized peptide.