

Product datasheet for **TA316393**

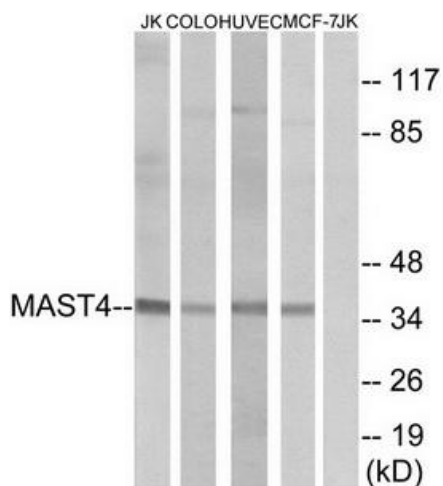
MAST4 Rabbit Polyclonal Antibody

Product data:

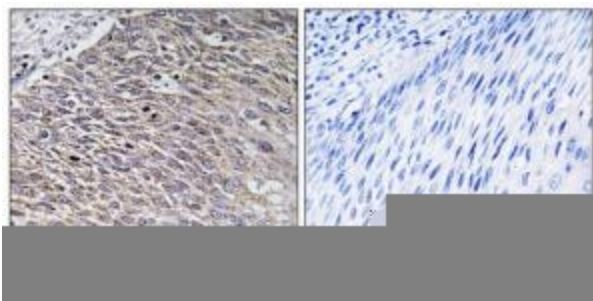
Product Type:	Primary Antibodies
Applications:	IF, IHC, WB
Recommended Dilution:	WB: 1:500~1:3000, IHC: 1:50~1:100, IF: 1:100~1:500, ELISA: 1:5000
Reactivity:	Human, Mouse
Host:	Rabbit
Isotype:	IgG
Clonality:	Polyclonal
Immunogen:	The antiserum was produced against synthesized peptide derived from internal of human MAST4.
Formulation:	Phosphate buffered saline (without Mg ²⁺ and Ca ²⁺), pH 7.4, 150mM NaCl, 0.02% sodium azide and 50% glycerol.
Concentration:	lot specific
Purification:	The antibody was affinity-purified from rabbit antiserum by affinity-chromatography using epitope-specific immunogen.
Conjugation:	Unconjugated
Storage:	Store at -20°C as received.
Stability:	Stable for 12 months from date of receipt.
Gene Name:	microtubule associated serine/threonine kinase family member 4
Database Link:	NP_001158136 Entrez Gene 328329 Mouse Entrez Gene 375449 Human O15021
Synonyms:	DKFZp686E18148; DKFZp686N1467; FLJ16540; FLJ33039; KIAA0303
Note:	MAST4 antibody detects endogenous levels of total MAST4 protein.
Protein Families:	Druggable Genome, Protein Kinase



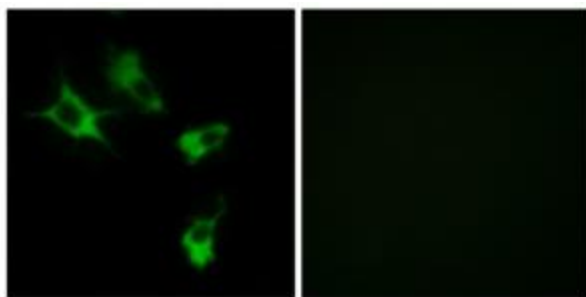
[View online »](#)

Product images:


Western blot analysis of extracts from Jurkat cells, COLO cells, HUVEC cells and MCF-7 cells, using MAST4 antibody. The lane on the right is treated with the synthesized peptide.



Immunohistochemistry analysis of paraffin-embedded human testis tissue using MAST4 antibody. The picture on the right is treated with the synthesized peptide.



Immunofluorescence analysis of COS-7 cells, using MAST4 antibody. The picture on the right is treated with the synthesized peptide.