

Product datasheet for **TA316388**

BMP8A Rabbit Polyclonal Antibody

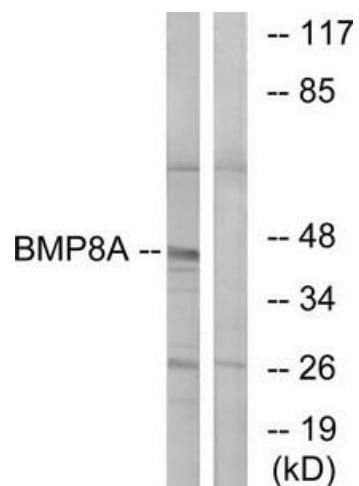
Product data:

Product Type:	Primary Antibodies
Applications:	IF, WB
Recommended Dilution:	WB: 1:500~1:3000, IF: 1:100~1:500, ELISA: 1:20000
Reactivity:	Human
Host:	Rabbit
Isotype:	IgG
Clonality:	Polyclonal
Immunogen:	The antiserum was produced against synthesized peptide derived from C-terminal of human BMP8A.
Formulation:	Phosphate buffered saline (without Mg ²⁺ and Ca ²⁺), pH 7.4, 150mM NaCl, 0.02% sodium azide and 50% glycerol.
Concentration:	lot specific
Purification:	The antibody was affinity-purified from rabbit antiserum by affinity-chromatography using epitope-specific immunogen.
Conjugation:	Unconjugated
Storage:	Store at -20°C as received.
Stability:	Stable for 12 months from date of receipt.
Gene Name:	bone morphogenetic protein 8a
Database Link:	NP_861525 Entrez Gene 353500 Human Q7Z5Y6
Synonyms:	FLJ14351; FLJ45264
Note:	BMP8A antibody detects endogenous levels of total BMP8A protein.
Protein Families:	Secreted Protein
Protein Pathways:	Hedgehog signaling pathway, TGF-beta signaling pathway

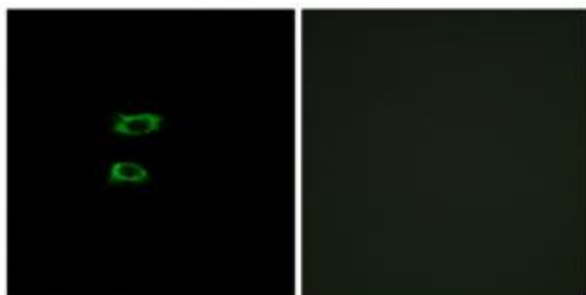


[View online »](#)

Product images:



Western blot analysis of extracts from COLO cells, using BMP8A antibody. The lane on the right is treated with the synthesized peptide.



Immunofluorescence analysis of A549 cells, using BMP8A antibody. The picture on the right is treated with the synthesized peptide.