

## Product datasheet for **TA316386**

### **GJE1 (GJC3) Rabbit Polyclonal Antibody**

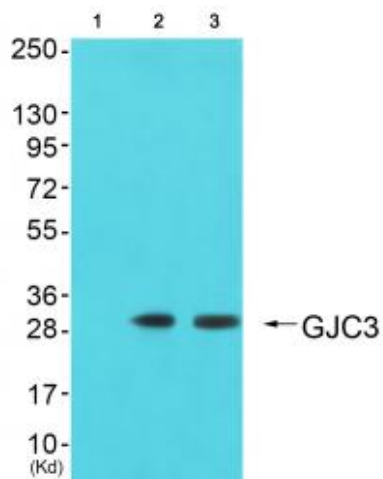
#### **Product data:**

<b>Product Type:</b>	Primary Antibodies
<b>Applications:</b>	WB
<b>Recommended Dilution:</b>	WB: 1:500~1:3000, ELISA: 1:40000
<b>Reactivity:</b>	Human
<b>Host:</b>	Rabbit
<b>Isotype:</b>	IgG
<b>Clonality:</b>	Polyclonal
<b>Immunogen:</b>	The antiserum was produced against synthesized peptide derived from internal of human GJC3.
<b>Formulation:</b>	Phosphate buffered saline (without Mg <sup>2+</sup> and Ca <sup>2+</sup> ), pH 7.4, 150mM NaCl, 0.02% sodium azide and 50% glycerol.
<b>Concentration:</b>	lot specific
<b>Purification:</b>	The antibody was affinity-purified from rabbit antiserum by affinity-chromatography using epitope-specific immunogen.
<b>Conjugation:</b>	Unconjugated
<b>Storage:</b>	Store at -20°C as received.
<b>Stability:</b>	Stable for 12 months from date of receipt.
<b>Gene Name:</b>	gap junction protein gamma 3
<b>Database Link:</b>	<a href="#">NP_853516</a> <a href="#">Entrez Gene 349149 Human</a> <a href="#">Q8NFK1</a>
<b>Synonyms:</b>	CX29; CX30.2; CX31.3; GJE1
<b>Note:</b>	GJC3 antibody detects endogenous levels of total GJC3 protein.
<b>Protein Families:</b>	Transmembrane

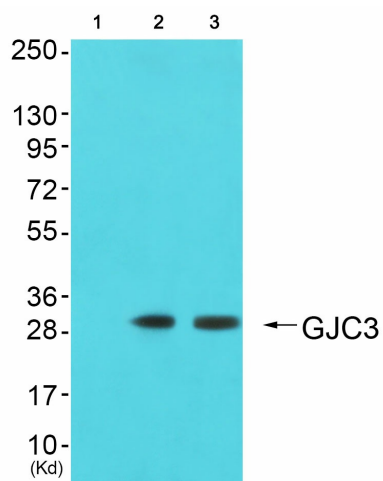


[View online »](#)

## Product images:



Western blot analysis of extracts from LOVO and HuvEc cells, using GJC3 antibody. The lane on the right is treated with the synthesized peptide.



Western blot analysis of extracts from JK cells (Lane 2) and cos-7 cells (Lane 3), using GJC3 Antibody. The lane on the left is treated with synthesized peptide.