

## Product datasheet for **TA316384**

### SERINC2 Rabbit Polyclonal Antibody

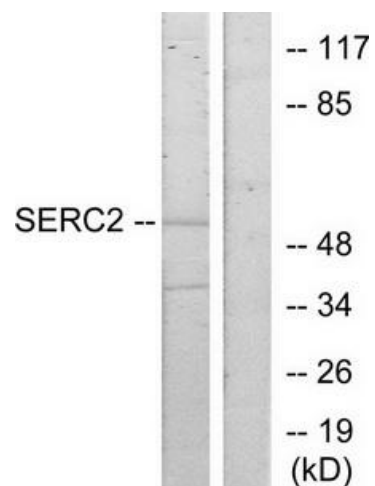
#### Product data:

Product Type:	Primary Antibodies
Applications:	IF, WB
Recommended Dilution:	WB: 1:500~1:3000, IF: 1:100~1:500, ELISA: 1:40000
Reactivity:	Human, Mouse, Rat
Host:	Rabbit
Isotype:	IgG
Clonality:	Polyclonal
Immunogen:	The antiserum was produced against synthesized peptide derived from internal of human SERC2.
Formulation:	Phosphate buffered saline (without Mg <sup>2+</sup> and Ca <sup>2+</sup> ), pH 7.4, 150mM NaCl, 0.02% sodium azide and 50% glycerol.
Concentration:	lot specific
Purification:	The antibody was affinity-purified from rabbit antiserum by affinity-chromatography using epitope-specific immunogen.
Conjugation:	Unconjugated
Storage:	Store at -20°C as received.
Stability:	Stable for 12 months from date of receipt.
Gene Name:	serine incorporator 2
Database Link:	<a href="#">NP_849196</a> <a href="#">Entrez Gene 230779 MouseEntrez Gene 313057 RatEntrez Gene 347735 Human Q96SA4</a>
Synonyms:	FKSG84; PRO0899; TDE2; TDE2L
Note:	SERC2 antibody detects endogenous levels of total SERC2 protein.
Protein Families:	Transmembrane

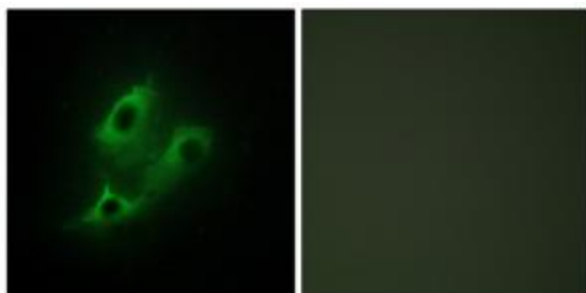


[View online »](#)

## Product images:



Western blot analysis of extracts from HeLa cells, using SERC2 antibody. The lane on the right is treated with the synthesized peptide.



Immunofluorescence analysis of NIH/3T3 cells, using SERC2 antibody. The picture on the right is treated with the synthesized peptide.