

Product datasheet for **TA316380**

OR1B1 Rabbit Polyclonal Antibody

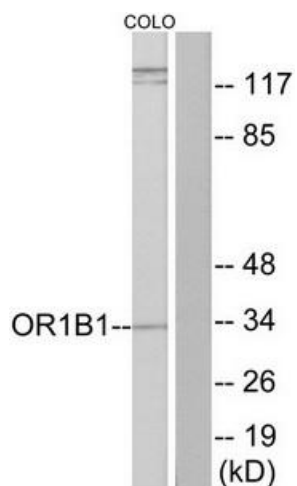
Product data:

Product Type:	Primary Antibodies
Applications:	IF, WB
Recommended Dilution:	WB: 1:500~1:3000, IF: 1:100~1:500, ELISA: 1:20000
Reactivity:	Human
Host:	Rabbit
Isotype:	IgG
Clonality:	Polyclonal
Immunogen:	The antiserum was produced against synthesized peptide derived from internal of human OR1B1.
Formulation:	Phosphate buffered saline (without Mg ²⁺ and Ca ²⁺), pH 7.4, 150mM NaCl, 0.02% sodium azide and 50% glycerol.
Concentration:	lot specific
Purification:	The antibody was affinity-purified from rabbit antiserum by affinity-chromatography using epitope-specific immunogen.
Conjugation:	Unconjugated
Storage:	Store at -20°C as received.
Stability:	Stable for 12 months from date of receipt.
Gene Name:	olfactory receptor family 1 subfamily B member 1 (gene/pseudogene)
Database Link:	NP_001004450 Entrez Gene 347169 Human Q8NGR6
Synonyms:	OR9-26; OR9-B
Note:	OR1B1 antibody detects endogenous levels of total OR1B1 protein
Protein Families:	Transmembrane
Protein Pathways:	Olfactory transduction

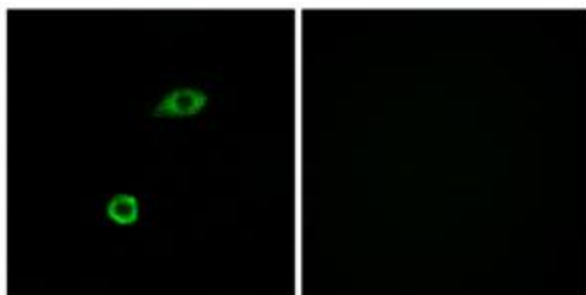


[View online »](#)

Product images:



Western blot analysis of extracts from COLO cells, using OR1B1 antibody. The lane on the right is treated with the synthesized peptide.



Immunofluorescence analysis of A549 cells, using OR1B1 antibody. The picture on the right is treated with the synthesized peptide.