

Product datasheet for **TA316375**

GPR149 Rabbit Polyclonal Antibody

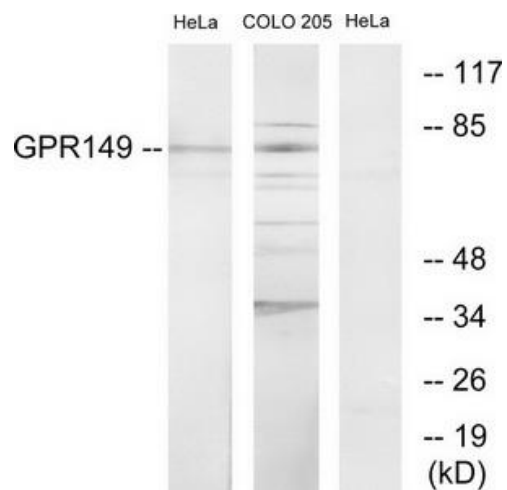
Product data:

Product Type:	Primary Antibodies
Applications:	IF, WB
Recommended Dilution:	WB: 1:500~1:3000, IF: 1:100~1:500, ELISA: 1:1000
Reactivity:	Human
Host:	Rabbit
Isotype:	IgG
Clonality:	Polyclonal
Immunogen:	The antiserum was produced against synthesized peptide derived from internal of human GPR149.
Formulation:	Phosphate buffered saline (without Mg ²⁺ and Ca ²⁺), pH 7.4, 150mM NaCl, 0.02% sodium azide and 50% glycerol.
Concentration:	lot specific
Purification:	The antibody was affinity-purified from rabbit antiserum by affinity-chromatography using epitope-specific immunogen.
Conjugation:	Unconjugated
Storage:	Store at -20°C as received.
Stability:	Stable for 12 months from date of receipt.
Gene Name:	G protein-coupled receptor 149
Database Link:	NP_001033794 Entrez Gene 344758 Human Q86SP6
Synonyms:	IEDA; PGR10
Note:	GPR149 antibody detects endogenous levels of total GPR149 protein.
Protein Families:	Druggable Genome, GPCR, Transmembrane

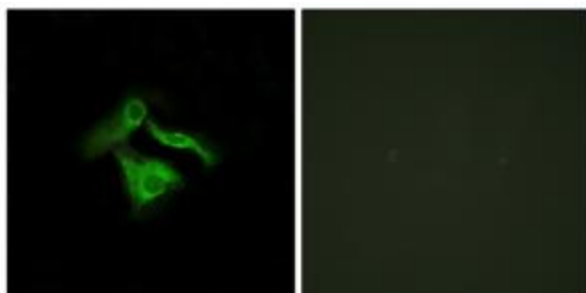


[View online »](#)

Product images:



Western blot analysis of extracts from HeLa cells and COLO205 cells, using GPR149 antibody. The lane on the right is treated with the synthesized peptide.



Immunofluorescence analysis of HeLa cells, using GPR149 antibody. The picture on the right is treated with the synthesized peptide.