

## Product datasheet for **TA316373**

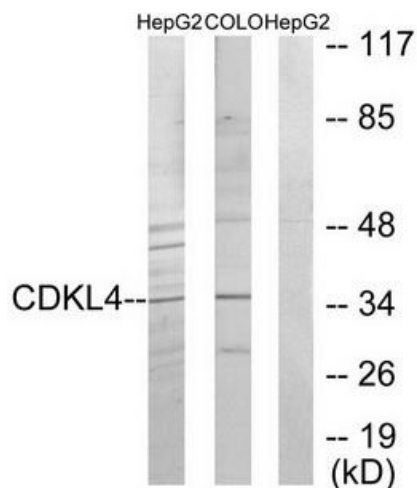
### CDKL4 Rabbit Polyclonal Antibody

#### Product data:

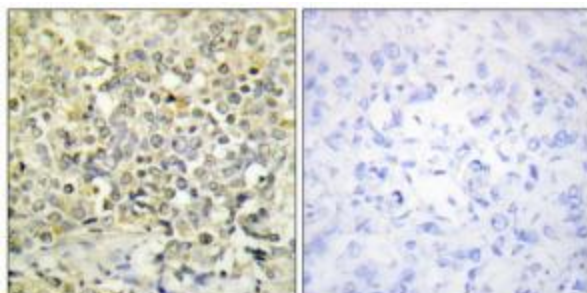
Product Type:	Primary Antibodies
Applications:	IF, IHC, WB
Recommended Dilution:	WB: 1:500~1:3000, IHC: 1:50~1:100, IF: 1:100~1:500, ELISA: 1:40000
Reactivity:	Human
Host:	Rabbit
Isotype:	IgG
Clonality:	Polyclonal
Immunogen:	The antiserum was produced against synthesized peptide derived from C-terminal of human CDKL4.
Formulation:	Phosphate buffered saline (without Mg <sup>2+</sup> and Ca <sup>2+</sup> ), pH 7.4, 150mM NaCl, 0.02% sodium azide and 50% glycerol.
Concentration:	lot specific
Purification:	The antibody was affinity-purified from rabbit antiserum by affinity-chromatography using epitope-specific immunogen.
Conjugation:	Unconjugated
Storage:	Store at -20°C as received.
Stability:	Stable for 12 months from date of receipt.
Gene Name:	cyclin dependent kinase like 4
Database Link:	<a href="#">NP_001009565</a> <a href="#">Entrez Gene 344387 Human</a> <a href="#">Q5MAI5</a>
Synonyms:	cyclin-dependent kinase-like 4; OTTHUMP00000164944
Note:	CDKL4 antibody detects endogenous levels of total CDKL4 protein.
Protein Families:	Druggable Genome, Protein Kinase



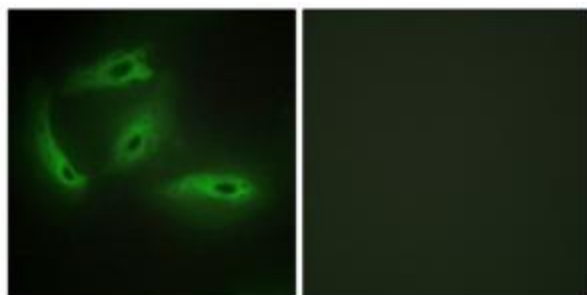
[View online »](#)

**Product images:**


Western blot analysis of extracts from HepG2 cells and COLO205 cells, using CDKL4 antibody. The lane on the right is treated with the synthesized peptide.



Immunohistochemistry analysis of paraffin-embedded human lung carcinoma tissue using CDKL4 antibody. The picture on the right is treated with the synthesized peptide.



Immunofluorescence analysis of HeLa cells, using CDKL4 antibody. The picture on the right is treated with the synthesized peptide.