

Product datasheet for **TA316356**

SYT10 Rabbit Polyclonal Antibody

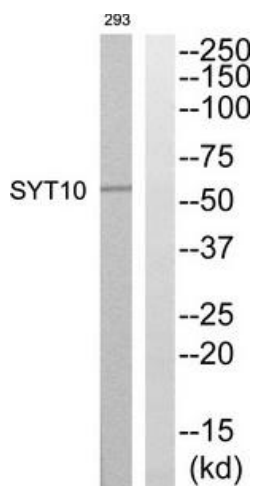
Product data:

Product Type:	Primary Antibodies
Applications:	WB
Recommended Dilution:	WB: 1:500~1:3000, ELISA: 1:10000
Reactivity:	Human, Mouse, Rat
Host:	Rabbit
Isotype:	IgG
Clonality:	Polyclonal
Immunogen:	The antiserum was produced against synthesized peptide derived from C-terminal of human SYT10.
Formulation:	Phosphate buffered saline (without Mg ²⁺ and Ca ²⁺), pH 7.4, 150mM NaCl, 0.02% sodium azide and 50% glycerol.
Concentration:	lot specific
Purification:	The antibody was affinity-purified from rabbit antiserum by affinity-chromatography using epitope-specific immunogen.
Conjugation:	Unconjugated
Storage:	Store at -20°C as received.
Stability:	Stable for 12 months from date of receipt.
Gene Name:	synaptotagmin 10
Database Link:	NP_945343 Entrez Gene 54526 Mouse Entrez Gene 60567 Rat Entrez Gene 341359 Human Q6XYQ8
Synonyms:	MGC119436; MGC119437
Note:	SYT10 Antibody detects endogenous levels of total SYT10 protein.
Protein Families:	Secreted Protein, Transmembrane



[View online »](#)

Product images:



Western blot analysis of extracts from 293 cells, using SYT10 Antibody. The lane on the right is treated with the synthesized peptide.