

Product datasheet for **TA316353**

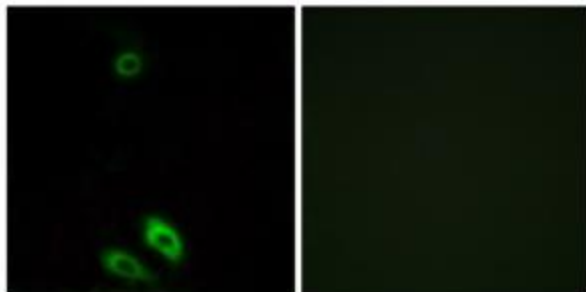
AKR1CL1 (AKR1C8P) Rabbit Polyclonal Antibody

Product data:

Product Type:	Primary Antibodies
Applications:	IF
Recommended Dilution:	IF: 1:100~1:500, ELISA: 1:40000
Reactivity:	Human
Host:	Rabbit
Isotype:	IgG
Clonality:	Polyclonal
Immunogen:	The antiserum was produced against synthesized peptide derived from internal of human AKR1CL1.
Formulation:	Phosphate buffered saline (without Mg ²⁺ and Ca ²⁺), pH 7.4, 150mM NaCl, 0.02% sodium azide and 50% glycerol.
Concentration:	lot specific
Purification:	The antibody was affinity-purified from rabbit antiserum by affinity-chromatography using epitope-specific immunogen.
Conjugation:	Unconjugated
Storage:	Store at -20°C as received.
Stability:	Stable for 12 months from date of receipt.
Gene Name:	aldo-keto reductase family 1, member C8, pseudogene
Database Link:	NP_001007537 Entrez Gene 340811 Human
Synonyms:	aldo-keto reductase family 1; FLJ16347; member C-like 1; protein RAKc
Note:	AKR1CL1 antibody detects endogenous levels of total AKR1CL1 protein.
Protein Families:	Druggable Genome



[View online »](#)

Product images:

Immunofluorescence analysis of A549 cells, using AKR1CL1 antibody. The picture on the right is treated with the synthesized peptide.