

## Product datasheet for **TA316352**

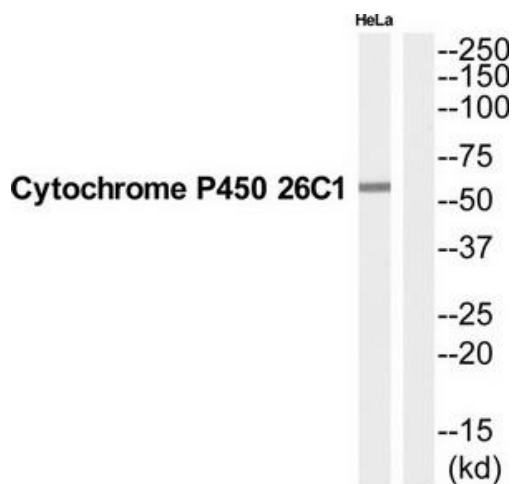
### CYP26C1 Rabbit Polyclonal Antibody

#### Product data:

Product Type:	Primary Antibodies
Applications:	WB
Recommended Dilution:	WB: 1:500~1:3000, ELISA: 1:40000
Reactivity:	Human, Mouse, Rat
Host:	Rabbit
Isotype:	IgG
Clonality:	Polyclonal
Immunogen:	The antiserum was produced against synthesized peptide derived from C-terminal of human CP26C.
Formulation:	Phosphate buffered saline (without Mg <sup>2+</sup> and Ca <sup>2+</sup> ), pH 7.4, 150mM NaCl, 0.02% sodium azide and 50% glycerol.
Concentration:	lot specific
Purification:	The antibody was affinity-purified from rabbit antiserum by affinity-chromatography using epitope-specific immunogen.
Conjugation:	Unconjugated
Storage:	Store at -20°C as received.
Stability:	Stable for 12 months from date of receipt.
Gene Name:	cytochrome P450 family 26 subfamily C member 1
Database Link:	<a href="#">NP_899230</a> <a href="#">Entrez Gene 546726 MouseEntrez Gene 308190 RatEntrez Gene 340665 Human Q6V0L0</a>
Synonyms:	FFDD4
Note:	CP26C antibody detects endogenous levels of total CP26C protein.
Protein Families:	Druggable Genome, Transmembrane
Protein Pathways:	Retinol metabolism



[View online »](#)

**Product images:**

Western blot analysis of extracts from HeLa cells, using CP26C antibody. The lane on the right is treated with the synthesized peptide.