

## Product datasheet for **TA316347**

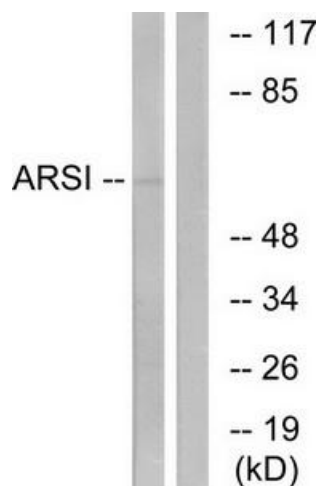
### ARSI Rabbit Polyclonal Antibody

#### Product data:

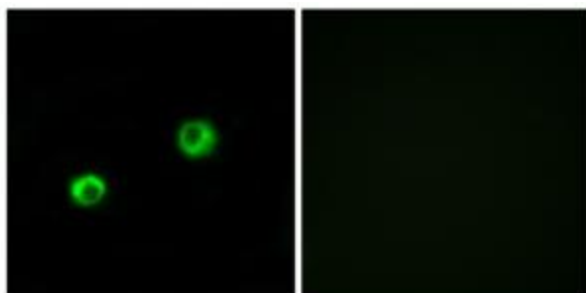
Product Type:	Primary Antibodies
Applications:	IF, WB
Recommended Dilution:	WB: 1:500~1:3000, IF: 1:100~1:500, ELISA: 1:60000
Reactivity:	Human
Host:	Rabbit
Isotype:	IgG
Clonality:	Polyclonal
Immunogen:	The antiserum was produced against synthesized peptide derived from internal of human ARSI.
Formulation:	Phosphate buffered saline (without Mg <sup>2+</sup> and Ca <sup>2+</sup> ), pH 7.4, 150mM NaCl, 0.02% sodium azide and 50% glycerol.
Concentration:	lot specific
Purification:	The antibody was affinity-purified from rabbit antiserum by affinity-chromatography using epitope-specific immunogen.
Conjugation:	Unconjugated
Storage:	Store at -20°C as received.
Stability:	Stable for 12 months from date of receipt.
Gene Name:	arylsulfatase family member I
Database Link:	<a href="#">NP_001012301</a> <a href="#">Entrez Gene 340075 Human</a> <a href="#">Q5FYB1</a>
Synonyms:	ASI; SPG66
Note:	ARSI antibody detects endogenous levels of total ARSI protein.
Protein Families:	Druggable Genome, Secreted Protein



[View online »](#)

**Product images:**

Western blot analysis of extracts from COS7 cells, using ARSI antibody. The lane on the right is treated with the synthesized peptide.



Immunofluorescence analysis of MCF-7 cells, using ARSI antibody. The picture on the right is treated with the synthesized peptide.