

## Product datasheet for **TA316345**

### GPR100 (RXFP4) Rabbit Polyclonal Antibody

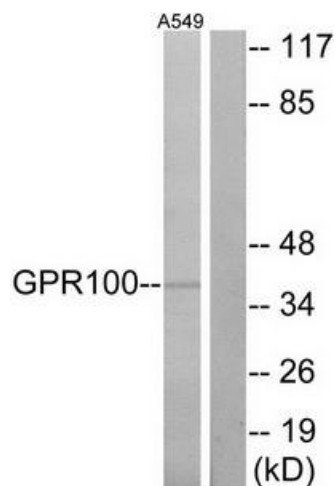
#### Product data:

Product Type:	Primary Antibodies
Applications:	IF, WB
Recommended Dilution:	WB: 1:500~1:3000, IF: 1:100~1:500, ELISA: 1:5000
Reactivity:	Human
Host:	Rabbit
Isotype:	IgG
Clonality:	Polyclonal
Immunogen:	The antiserum was produced against synthesized peptide derived from C-terminal of human GPR100.
Formulation:	Phosphate buffered saline (without Mg <sup>2+</sup> and Ca <sup>2+</sup> ), pH 7.4, 150mM NaCl, 0.02% sodium azide and 50% glycerol.
Concentration:	lot specific
Purification:	The antibody was affinity-purified from rabbit antiserum by affinity-chromatography using epitope-specific immunogen.
Conjugation:	Unconjugated
Storage:	Store at -20°C as received.
Stability:	Stable for 12 months from date of receipt.
Gene Name:	relaxin/insulin like family peptide receptor 4
Database Link:	<a href="#">NP_871001</a> <a href="#">Entrez Gene 339403 Human</a> <a href="#">Q8TDU9</a>
Synonyms:	GPCR142; GPR100; RLN3R2; RXFP4
Note:	GPR100 antibody detects endogenous levels of total GPR100 protein.
Protein Families:	Druggable Genome, Transmembrane

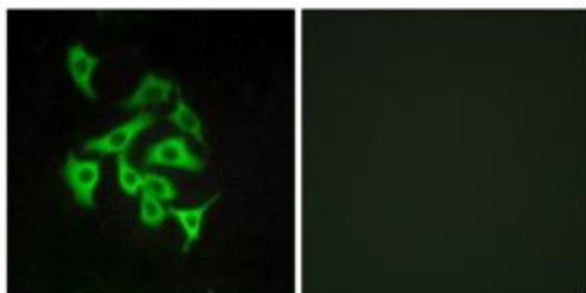


[View online »](#)

## Product images:



Western blot analysis of extracts from A549 cells, using GPR100 antibody. The lane on the right is treated with the synthesized peptide.



Immunofluorescence analysis of A549 cells, using GPR100 antibody. The picture on the right is treated with the synthesized peptide.