

Product datasheet for **TA316332**

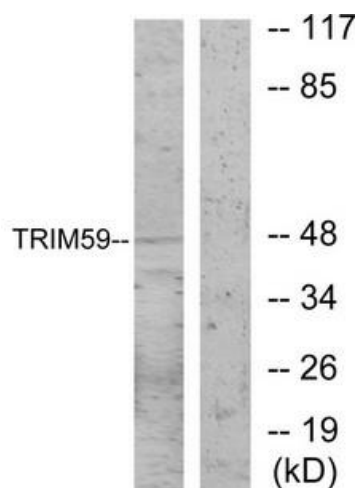
TRIM59 Rabbit Polyclonal Antibody

Product data:

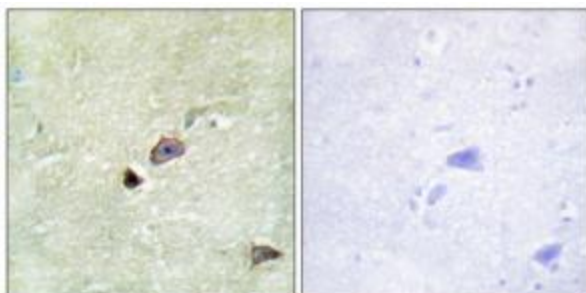
Product Type:	Primary Antibodies
Applications:	IF, IHC, WB
Recommended Dilution:	WB: 1:500~1:3000, IHC: 1:50~1:100, IF: 1:100~1:500, ELISA: 1:5000
Reactivity:	Human, Mouse
Host:	Rabbit
Isotype:	IgG
Clonality:	Polyclonal
Immunogen:	The antiserum was produced against synthesized peptide derived from internal of human TRIM59.
Formulation:	Phosphate buffered saline (without Mg ²⁺ and Ca ²⁺), pH 7.4, 150mM NaCl, 0.02% sodium azide and 50% glycerol.
Concentration:	lot specific
Purification:	The antibody was affinity-purified from rabbit antiserum by affinity-chromatography using epitope-specific immunogen.
Conjugation:	Unconjugated
Storage:	Store at -20°C as received.
Stability:	Stable for 12 months from date of receipt.
Gene Name:	tripartite motif containing 59
Database Link:	NP_775107 Entrez Gene 66949 Mouse Entrez Gene 286827 Human Q8IWR1
Synonyms:	IFT80L; MRF1; RNF104; TRIM57; TSBF1
Note:	TRIM59 antibody detects endogenous levels of total TRIM59 protein.
Protein Families:	Druggable Genome, Transmembrane



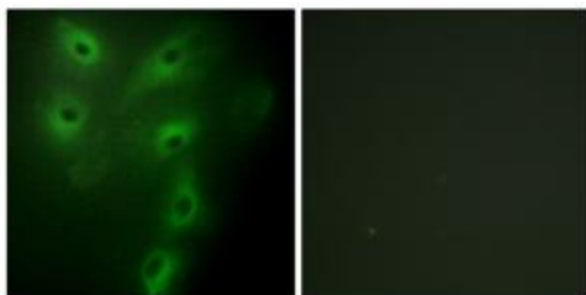
[View online »](#)

Product images:

Western blot analysis of extracts from NIH-3T3 cells, using TRIM59 antibody. The lane on the right is treated with the synthesized peptide.



Immunohistochemistry analysis of paraffin-embedded human brain tissue using TRIM59 antibody. The picture on the right is treated with the synthesized peptide.



Immunofluorescence analysis of HeLa cells, using TRIM59 antibody. The picture on the right is treated with the synthesized peptide.