

Product datasheet for **TA316330**

P2Y8 (P2RY8) Rabbit Polyclonal Antibody

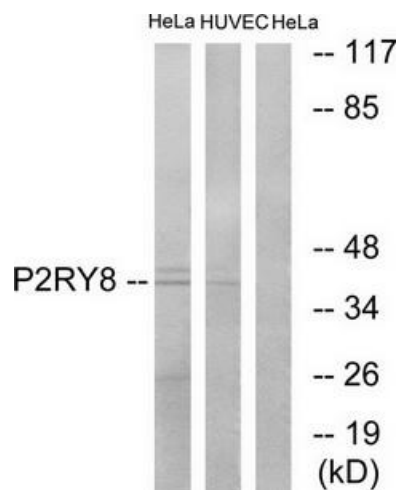
Product data:

Product Type:	Primary Antibodies
Applications:	WB
Recommended Dilution:	WB: 1:500~1:3000, ELISA: 1:20000
Reactivity:	Human
Host:	Rabbit
Isotype:	IgG
Clonality:	Polyclonal
Immunogen:	The antiserum was produced against synthesized peptide derived from internal of human P2RY8.
Formulation:	Phosphate buffered saline (without Mg ²⁺ and Ca ²⁺), pH 7.4, 150mM NaCl, 0.02% sodium azide and 50% glycerol.
Concentration:	lot specific
Purification:	The antibody was affinity-purified from rabbit antiserum by affinity-chromatography using epitope-specific immunogen.
Conjugation:	Unconjugated
Storage:	Store at -20°C as received.
Stability:	Stable for 12 months from date of receipt.
Gene Name:	purinergic receptor P2Y8
Database Link:	NP_835230 Entrez Gene 286530 Human Q86VZ1
Synonyms:	P2Y8
Note:	P2RY8 antibody detects endogenous levels of total P2RY8 protein.
Protein Families:	Druggable Genome, GPCR, Transmembrane
Protein Pathways:	Neuroactive ligand-receptor interaction



[View online »](#)

Product images:



Western blot analysis of extracts from HeLa cells and HUVEC cells, using P2RY8 antibody. The lane on the right is treated with the synthesized peptide.