

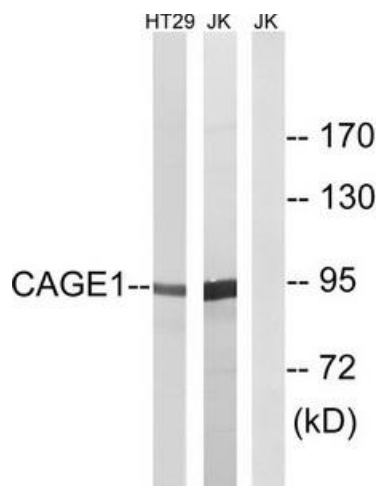
Product datasheet for **TA316327**

CAGE1 Rabbit Polyclonal Antibody

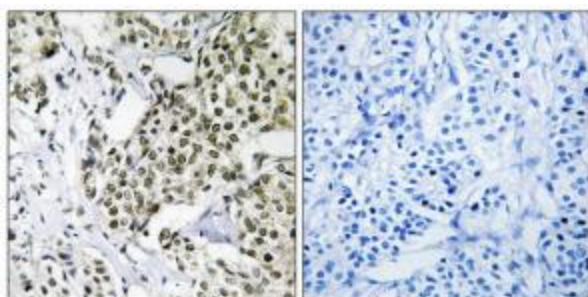
Product data:

Product Type:	Primary Antibodies
Applications:	IHC, WB
Recommended Dilution:	WB: 1:500~1:3000, IHC: 1:50~1:100, ELISA: 1:40000
Reactivity:	Human
Host:	Rabbit
Isotype:	IgG
Clonality:	Polyclonal
Immunogen:	The antiserum was produced against synthesized peptide derived from internal of human CAGE1.
Formulation:	Phosphate buffered saline (without Mg ²⁺ and Ca ²⁺), pH 7.4, 150mM NaCl, 0.02% sodium azide and 50% glycerol.
Concentration:	lot specific
Purification:	The antibody was affinity-purified from rabbit antiserum by affinity-chromatography using epitope-specific immunogen.
Conjugation:	Unconjugated
Storage:	Store at -20°C as received.
Stability:	Stable for 12 months from date of receipt.
Gene Name:	cancer antigen 1
Database Link:	NP_001164163 Entrez Gene 285782 Human Q8TC20
Synonyms:	bA69L16.7; CT3; CT95; CTAG3
Note:	CAGE1 antibody detects endogenous levels of total CAGE1 protein.

[View online »](#)

Product images:


Western blot analysis of extracts from HT-29 cells and Jurkat cells, using CAGE1 antibody. The lane on the right is treated with the synthesized peptide.



Immunohistochemistry analysis of paraffin-embedded human breast carcinoma tissue using CAGE1 antibody. The picture on the right is treated with the synthesized peptide.