

Product datasheet for **TA316325**

GPR 150 (GPR150) Rabbit Polyclonal Antibody

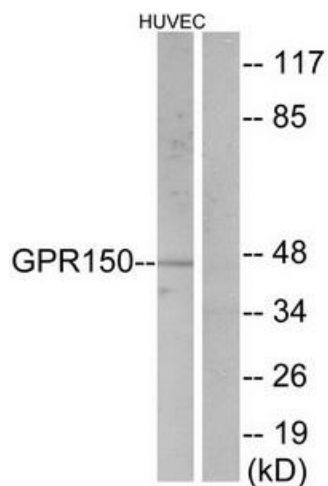
Product data:

Product Type:	Primary Antibodies
Applications:	IF, WB
Recommended Dilution:	WB: 1:500~1:3000, IF: 1:100~1:500, ELISA: 1:5000
Reactivity:	Human
Host:	Rabbit
Isotype:	IgG
Clonality:	Polyclonal
Immunogen:	The antiserum was produced against synthesized peptide derived from internal of human GPR150.
Formulation:	Phosphate buffered saline (without Mg ²⁺ and Ca ²⁺), pH 7.4, 150mM NaCl, 0.02% sodium azide and 50% glycerol.
Concentration:	lot specific
Purification:	The antibody was affinity-purified from rabbit antiserum by affinity-chromatography using epitope-specific immunogen.
Conjugation:	Unconjugated
Storage:	Store at -20°C as received.
Stability:	Stable for 12 months from date of receipt.
Gene Name:	G protein-coupled receptor 150
Database Link:	NP_954713 Entrez Gene 285601 Human Q8NGU9
Synonyms:	PGR11
Note:	GPR150 antibody detects endogenous levels of total GPR150 protein.
Protein Families:	Druggable Genome, Transmembrane

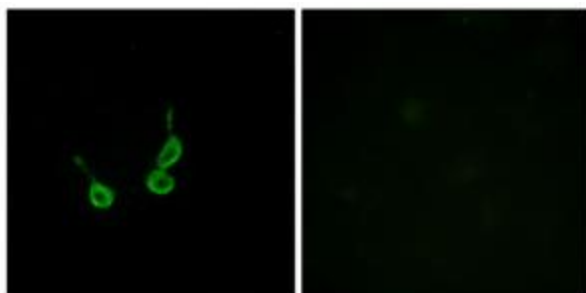


[View online »](#)

Product images:



Western blot analysis of extracts from HUVEC cells, using GPR150 antibody. The lane on the right is treated with the synthesized peptide.



Immunofluorescence analysis of HepG2 cells, using GPR150 antibody. The picture on the right is treated with the synthesized peptide.