

Product datasheet for **TA316317**

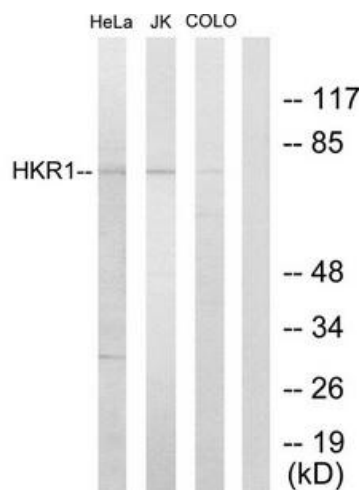
ZNF875 Rabbit Polyclonal Antibody

Product data:

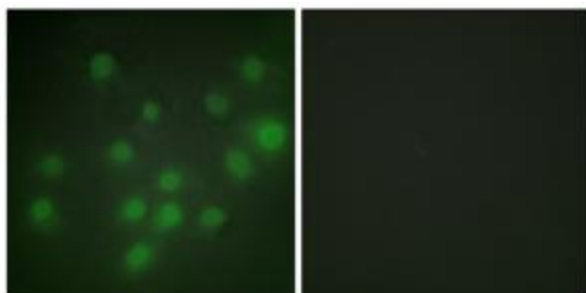
Product Type:	Primary Antibodies
Applications:	IF, WB
Recommended Dilution:	WB: 1:500~1:3000, IF: 1:100~1:500, ELISA: 1:1000
Reactivity:	Human
Host:	Rabbit
Isotype:	IgG
Clonality:	Polyclonal
Immunogen:	The antiserum was produced against synthesized peptide derived from internal of human HKR1.
Formulation:	Phosphate buffered saline (without Mg ²⁺ and Ca ²⁺), pH 7.4, 150mM NaCl, 0.02% sodium azide and 50% glycerol.
Concentration:	lot specific
Purification:	The antibody was affinity-purified from rabbit antiserum by affinity-chromatography using epitope-specific immunogen.
Conjugation:	Unconjugated
Storage:	Store at -20°C as received.
Stability:	Stable for 12 months from date of receipt.
Gene Name:	HKR1, GLI-Kruppel zinc finger family member
Database Link:	NP_861451 Entrez Gene 284459 Human P10072
Synonyms:	ZNF875
Note:	HKR1 antibody detects endogenous levels of total HKR1 protein.
Protein Families:	Druggable Genome, Transcription Factors



[View online »](#)

Product images:


Western blot analysis of extracts from HeLa cells, Jurkat cells and COLO205 cells, using HKR1 antibody. The lane on the right is treated with the synthesized peptide.



Immunofluorescence analysis of HUVEC cells, using HKR1 antibody. The picture on the right is treated with the synthesized peptide.