

Product datasheet for **TA316316**

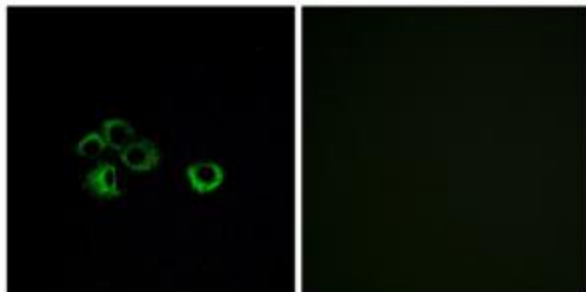
OR2Z1 Rabbit Polyclonal Antibody

Product data:

| | |
|-----------------------|--|
| Product Type: | Primary Antibodies |
| Applications: | IF |
| Recommended Dilution: | IF: 1:100~1:500, ELISA: 1:10000 |
| Reactivity: | Human |
| Host: | Rabbit |
| Isotype: | IgG |
| Clonality: | Polyclonal |
| Immunogen: | The antiserum was produced against synthesized peptide derived from internal of human OR2Z1. |
| Formulation: | Phosphate buffered saline (without Mg ²⁺ and Ca ²⁺), pH 7.4, 150mM NaCl, 0.02% sodium azide and 50% glycerol. |
| Concentration: | lot specific |
| Purification: | The antibody was affinity-purified from rabbit antiserum by affinity-chromatography using epitope-specific immunogen. |
| Conjugation: | Unconjugated |
| Storage: | Store at -20°C as received. |
| Stability: | Stable for 12 months from date of receipt. |
| Gene Name: | olfactory receptor family 2 subfamily Z member 1 |
| Database Link: | NP_001004699 Entrez Gene 284383 Human Q8NG97 |
| Synonyms: | OR2Z2; OR19-4 |
| Note: | OR2Z1 antibody detects endogenous levels of total OR2Z1 protein. |
| Protein Families: | Transmembrane |
| Protein Pathways: | Olfactory transduction |



[View online »](#)

Product images:

Immunofluorescence analysis of MCF-7 cells, using OR2Z1 antibody. The picture on the right is treated with the synthesized peptide.