

## Product datasheet for **TA316312**

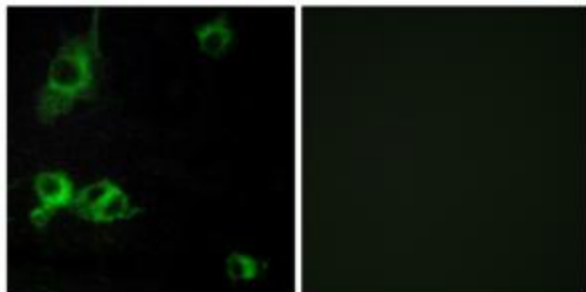
### Laminin (LAMA1) Rabbit Polyclonal Antibody

#### Product data:

|                       |  |
|-----------------------|--|
| Product Type:         | Primary Antibodies   |
| Applications:         | IF   |
| Recommended Dilution: | IF: 1:100~1:500, ELISA: 1:40000  |
| Reactivity:           | Human  |
| Host:                 | Rabbit   |
| Isotype:              | IgG  |
| Clonality:            | Polyclonal   |
| Immunogen:            | The antiserum was produced against synthesized peptide derived from internal of human LAMA1.   |
| Formulation:          | Phosphate buffered saline (without Mg <sup>2+</sup> and Ca <sup>2+</sup> ), pH 7.4, 150mM NaCl, 0.02% sodium azide and 50% glycerol. |
| Concentration:        | lot specific   |
| Purification:         | The antibody was affinity-purified from rabbit antiserum by affinity-chromatography using epitope-specific immunogen.                |
| Conjugation:          | Unconjugated   |
| Storage:              | Store at -20°C as received.  |
| Stability:            | Stable for 12 months from date of receipt.   |
| Gene Name:            | laminin subunit alpha 1  |
| Database Link:        | <a href="#">NP_005550</a><br><a href="#">Entrez Gene 284217 Human P25391</a>   |
| Synonyms:             | LAMA; PTBHS; S-LAM-alpha   |
| Note:                 | LAMA1 antibody detects endogenous levels of total LAMA1 protein. Customer feedback claims that this antibody is also good for WB.    |
| Protein Families:     | Druggable Genome, ES Cell Differentiation/IPS  |
| Protein Pathways:     | ECM-receptor interaction, Focal adhesion, Pathways in cancer, Small cell lung cancer   |



[View online »](#)

**Product images:**

Immunofluorescence analysis of COS-7 cells, using LAMA1 antibody. The picture on the right is treated with the synthesized peptide.