

Product datasheet for **TA316311**

CAVIN1 Rabbit Polyclonal Antibody

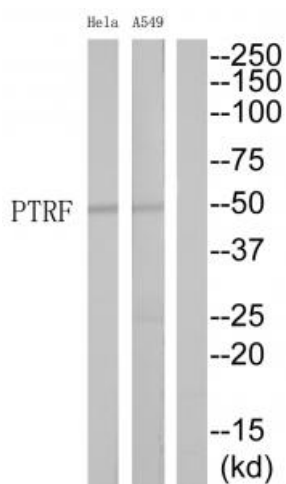
Product data:

Product Type:	Primary Antibodies
Applications:	WB
Recommended Dilution:	WB: 1:500~1:1000, ELISA: 1:10000
Reactivity:	Human, Mouse, Rat
Host:	Rabbit
Isotype:	IgG
Clonality:	Polyclonal
Immunogen:	The antiserum was produced against synthesized peptide derived from Internal of human PTRF.
Formulation:	Phosphate buffered saline (without Mg ²⁺ and Ca ²⁺), pH 7.4, 150mM NaCl, 0.02% sodium azide and 50% glycerol.
Concentration:	lot specific
Purification:	The antibody was affinity-purified from rabbit antiserum by affinity-chromatography using epitope-specific immunogen.
Conjugation:	Unconjugated
Storage:	Store at -20°C as received.
Stability:	Stable for 12 months from date of receipt.
Gene Name:	polymerase I and transcript release factor
Database Link:	NP_036364 Entrez Gene 19285 MouseEntrez Gene 287710 RatEntrez Gene 284119 Human Q6NZI2
Synonyms:	CAVIN; cavin-1; CAVIN1; CGL4; FKSG13
Note:	PTRF antibody detects endogenous levels of total PTRF protein.
Protein Families:	Transcription Factors



[View online »](#)

Product images:



Western blot analysis of extracts from HeLa cells and A549 cells, using PTRF antibody. The lane on the right is treated with the synthesized peptide.