

Product datasheet for **TA316309**

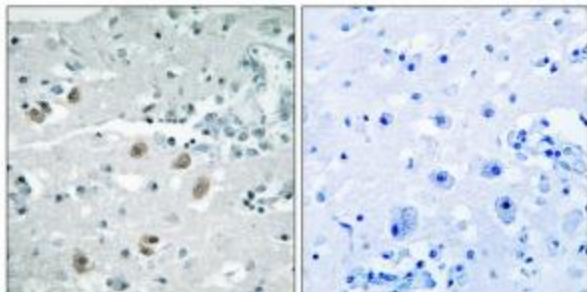
PLA2G4D Rabbit Polyclonal Antibody

Product data:

Product Type:	Primary Antibodies
Applications:	IHC
Recommended Dilution:	IHC: 1:50~1:100, ELISA: 1:40000
Reactivity:	Human
Host:	Rabbit
Isotype:	IgG
Clonality:	Polyclonal
Immunogen:	The antiserum was produced against synthesized peptide derived from internal of human PLA2G4D.
Formulation:	Phosphate buffered saline (without Mg ²⁺ and Ca ²⁺), pH 7.4, 150mM NaCl, 0.02% sodium azide and 50% glycerol.
Concentration:	lot specific
Purification:	The antibody was affinity-purified from rabbit antiserum by affinity-chromatography using epitope-specific immunogen.
Conjugation:	Unconjugated
Storage:	Store at -20°C as received.
Stability:	Stable for 12 months from date of receipt.
Gene Name:	phospholipase A2 group IVD
Database Link:	NP_828848 Entrez Gene 283748 Human Q86XP0
Synonyms:	cPLA2delta
Note:	PLA2G4D antibody detects endogenous levels of total PLA2G4D protein.
Protein Pathways:	Fc gamma R-mediated phagocytosis



[View online »](#)

Product images:

Immunohistochemistry analysis of paraffin-embedded human brain tissue using PLA2G4D antibody. The picture on the right is treated with the synthesized peptide.