

## Product datasheet for **TA316300**

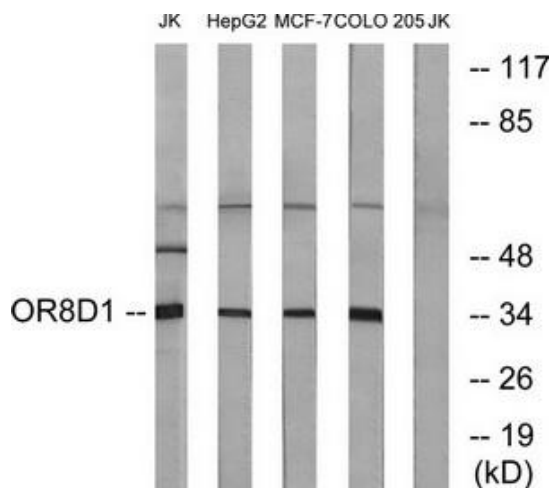
### OR8D1 Rabbit Polyclonal Antibody

#### Product data:

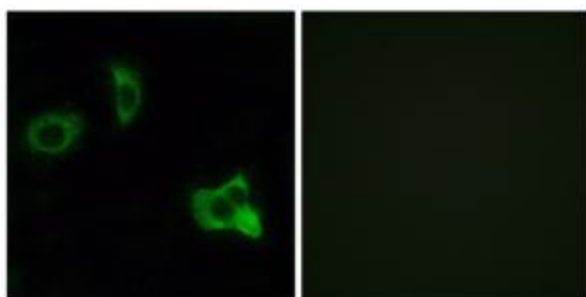
Product Type:	Primary Antibodies
Applications:	IF, WB
Recommended Dilution:	WB: 1:500~1:3000, IF: 1:100~1:500, ELISA: 1:20000
Reactivity:	Human
Host:	Rabbit
Isotype:	IgG
Clonality:	Polyclonal
Immunogen:	The antiserum was produced against synthesized peptide derived from internal of human OR8D1.
Formulation:	Phosphate buffered saline (without Mg <sup>2+</sup> and Ca <sup>2+</sup> ), pH 7.4, 150mM NaCl, 0.02% sodium azide and 50% glycerol.
Concentration:	lot specific
Purification:	The antibody was affinity-purified from rabbit antiserum by affinity-chromatography using epitope-specific immunogen.
Conjugation:	Unconjugated
Storage:	Store at -20°C as received.
Stability:	Stable for 12 months from date of receipt.
Gene Name:	olfactory receptor family 8 subfamily D member 1
Database Link:	<a href="#">NP_001002917</a> <a href="#">Entrez Gene 283159 Human</a> <a href="#">Q8WZ84</a>
Synonyms:	JCG9; OR8D3; OST004; PDJ9J14
Note:	OR8D1 antibody detects endogenous levels of total OR8D1 protein.
Protein Families:	Druggable Genome, Transmembrane
Protein Pathways:	Olfactory transduction



[View online »](#)

**Product images:**


Western blot analysis of extracts from Jurkat cells, HepG2 cells, MCF-7 cells and COLO cells, using OR8D1 antibody. The lane on the right is treated with the synthesized peptide.



Immunofluorescence analysis of MCF-7 cells, using OR8D1 antibody. The picture on the right is treated with the synthesized peptide.