

Product datasheet for **TA316292**

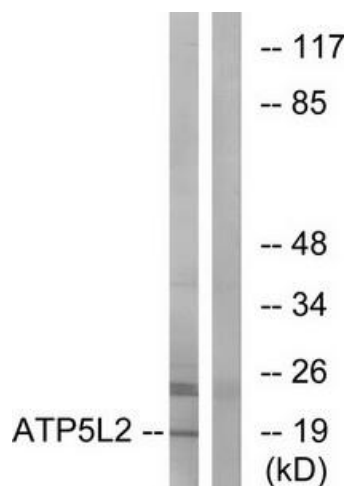
ATP5L2 Rabbit Polyclonal Antibody

Product data:

Product Type:	Primary Antibodies
Applications:	IF, WB
Recommended Dilution:	WB: 1:500~1:3000, IF: 1:100~1:500, ELISA: 1:40000
Reactivity:	Human
Host:	Rabbit
Isotype:	IgG
Clonality:	Polyclonal
Immunogen:	The antiserum was produced against synthesized peptide derived from internal of human ATP5L2.
Formulation:	Phosphate buffered saline (without Mg ²⁺ and Ca ²⁺), pH 7.4, 150mM NaCl, 0.02% sodium azide and 50% glycerol.
Concentration:	lot specific
Purification:	The antibody was affinity-purified from rabbit antiserum by affinity-chromatography using epitope-specific immunogen.
Conjugation:	Unconjugated
Storage:	Store at -20°C as received.
Stability:	Stable for 12 months from date of receipt.
Gene Name:	ATP synthase, H ⁺ transporting, mitochondrial Fo complex subunit G2
Database Link:	NP_001159349 Entrez Gene 267020 Human Q7Z4Y8
Synonyms:	ATP5K2
Note:	ATP5L2 antibody detects endogenous levels of total ATP5L2 protein.



[View online »](#)

Product images:

Western blot analysis of extracts from A549 cells, using ATP5L2 antibody. The lane on the right is treated with the synthesized peptide.



Immunofluorescence analysis of A549 cells, using ATP5L2 antibody. The picture on the right is treated with the synthesized peptide.