

Product datasheet for **TA316291**

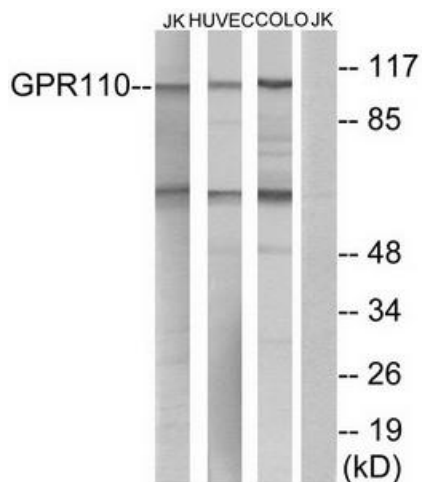
GPR110 (ADGRF1) Rabbit Polyclonal Antibody

Product data:

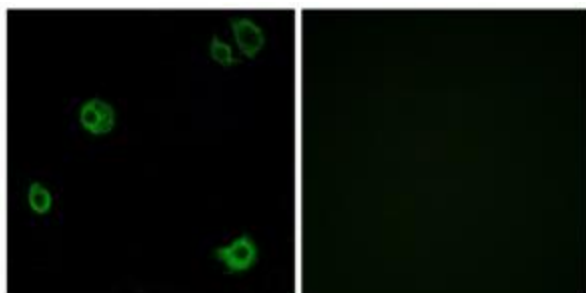
Product Type:	Primary Antibodies
Applications:	IF, WB
Recommended Dilution:	WB: 1:500~1:3000, IF: 1:100~1:500, ELISA: 1:40000
Reactivity:	Human
Host:	Rabbit
Isotype:	IgG
Clonality:	Polyclonal
Immunogen:	The antiserum was produced against synthesized peptide derived from internal of human GPR110.
Formulation:	Phosphate buffered saline (without Mg ²⁺ and Ca ²⁺), pH 7.4, 150mM NaCl, 0.02% sodium azide and 50% glycerol.
Concentration:	lot specific
Purification:	The antibody was affinity-purified from rabbit antiserum by affinity-chromatography using epitope-specific immunogen.
Conjugation:	Unconjugated
Storage:	Store at -20°C as received.
Stability:	Stable for 12 months from date of receipt.
Gene Name:	adhesion G protein-coupled receptor F1
Database Link:	NP_079324 Entrez Gene 266977 Human Q5T601
Synonyms:	GPR110; hGPCR36; KPG_012; PGR19
Note:	GPR110 antibody detects endogenous levels of total GPR110 protein.
Protein Families:	Druggable Genome, Transmembrane



[View online »](#)

Product images:


Western blot analysis of extracts from Jurkat cells, HUVEC cells and COLO cells, using GPR110 antibody. The lane on the right is treated with the synthesized peptide.



Immunofluorescence analysis of A549 cells, using GPR110 antibody. The picture on the right is treated with the synthesized peptide.