

Product datasheet for **TA316290**

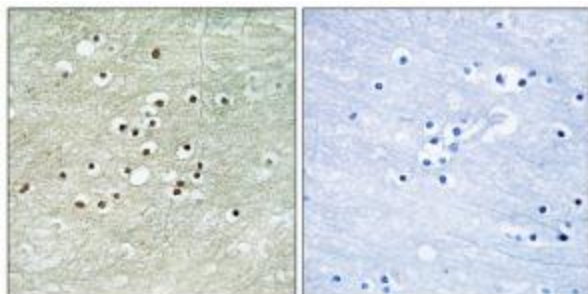
NPAS4 Rabbit Polyclonal Antibody

Product data:

Product Type:	Primary Antibodies
Applications:	IHC
Recommended Dilution:	IHC: 1:50~1:100, ELISA: 1:1000
Reactivity:	Human, Mouse, Rat
Host:	Rabbit
Isotype:	IgG
Clonality:	Polyclonal
Immunogen:	The antiserum was produced against synthesized peptide derived from internal of human NPAS4.
Formulation:	Phosphate buffered saline (without Mg ²⁺ and Ca ²⁺), pH 7.4, 150mM NaCl, 0.02% sodium azide and 50% glycerol.
Concentration:	lot specific
Purification:	The antibody was affinity-purified from rabbit antiserum by affinity-chromatography using epitope-specific immunogen.
Conjugation:	Unconjugated
Storage:	Store at -20°C as received.
Stability:	Stable for 12 months from date of receipt.
Gene Name:	neuronal PAS domain protein 4
Database Link:	NP_849195 Entrez Gene 225872 MouseEntrez Gene 266734 RatEntrez Gene 266743 Human Q8IUM7
Synonyms:	bHLHe79; Le-PAS; NXF; PASD10
Note:	NPAS4 antibody detects endogenous levels of total NPAS4 protein.
Protein Families:	Druggable Genome, Transcription Factors



[View online »](#)

Product images:

Immunohistochemistry analysis of paraffin-embedded human brain tissue using NPAS4 antibody. The picture on the right is treated with the synthesized peptide.