

## Product datasheet for **TA316287**

### STEAP2 Rabbit Polyclonal Antibody

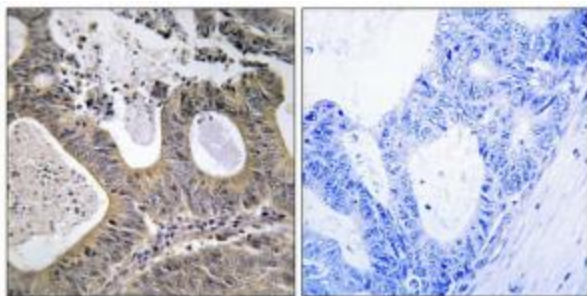
#### Product data:

Product Type:	Primary Antibodies
Applications:	IF, IHC
Recommended Dilution:	IHC: 1:50~1:100, IF: 1:00~1:500, ELISA: 1:1000
Reactivity:	Human, Mouse
Host:	Rabbit
Isotype:	IgG
Clonality:	Polyclonal
Immunogen:	The antiserum was produced against synthesized peptide derived from C-terminal of human STEA2.
Formulation:	Phosphate buffered saline (without Mg <sup>2+</sup> and Ca <sup>2+</sup> ), pH 7.4, 150mM NaCl, 0.02% sodium azide and 50% glycerol.
Concentration:	lot specific
Purification:	The antibody was affinity-purified from rabbit antiserum by affinity-chromatography using epitope-specific immunogen.
Conjugation:	Unconjugated
Storage:	Store at -20°C as received.
Stability:	Stable for 12 months from date of receipt.
Gene Name:	STEAP2 metalloredutase
Database Link:	<a href="#">NP_694544</a> <a href="#">Entrez Gene 74051 Mouse</a> <a href="#">Entrez Gene 261729 Human</a> <a href="#">Q8NFT2</a>
Synonyms:	IPCA1; PCANAP1; PUMPCn; STAMP1; STMP
Note:	STEA2 antibody detects endogenous levels of total STEA2 protein.
Protein Families:	Transmembrane

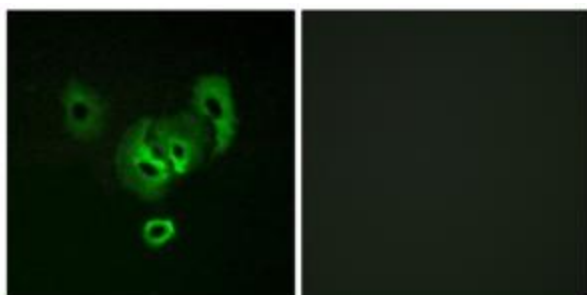


[View online »](#)

## Product images:



Immunohistochemistry analysis of paraffin-embedded human colon carcinoma tissue, using STEAP2 antibody. The picture on the right is treated with the synthesized peptide.



Immunofluorescence analysis of A549 cells, using STEAP2 antibody. The picture on the right is treated with the synthesized peptide.