

## Product datasheet for **TA316286**

### PRSS33 Rabbit Polyclonal Antibody

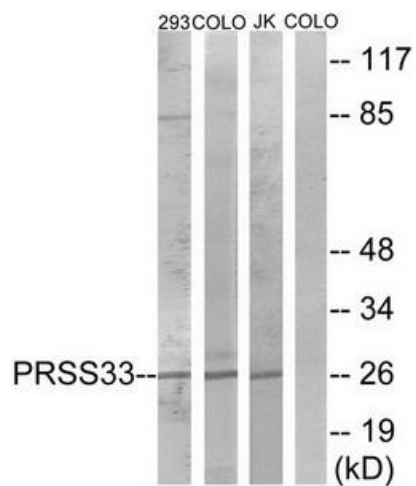
#### Product data:

Product Type:	Primary Antibodies
Applications:	WB
Recommended Dilution:	WB: 1:500~1:3000, ELISA: 1:10000
Reactivity:	Human, Mouse
Host:	Rabbit
Isotype:	IgG
Clonality:	Polyclonal
Immunogen:	The antiserum was produced against synthesized peptide derived from internal of human PRSS33.
Formulation:	Phosphate buffered saline (without Mg <sup>2+</sup> and Ca <sup>2+</sup> ), pH 7.4, 150mM NaCl, 0.02% sodium azide and 50% glycerol.
Concentration:	lot specific
Purification:	The antibody was affinity-purified from rabbit antiserum by affinity-chromatography using epitope-specific immunogen.
Conjugation:	Unconjugated
Storage:	Store at -20°C as received.
Stability:	Stable for 12 months from date of receipt.
Gene Name:	protease, serine 33
Database Link:	<a href="#">NP_690851</a> <a href="#">Entrez Gene 353130 Mouse</a> <a href="#">Entrez Gene 260429 Human</a> <a href="#">Q8NF86</a>
Synonyms:	EOS
Note:	PRSS33 antibody detects endogenous levels of total PRSS33 protein.
Protein Families:	Druggable Genome, Protease



[View online »](#)

## Product images:



Western blot analysis of extracts from 293 cells, COLO cells and Jurkat cells, using PRSS33 antibody. The lane on the right is treated with the synthesized peptide.