

Product datasheet for **TA316282**

IL4I1 Rabbit Polyclonal Antibody

Product data:

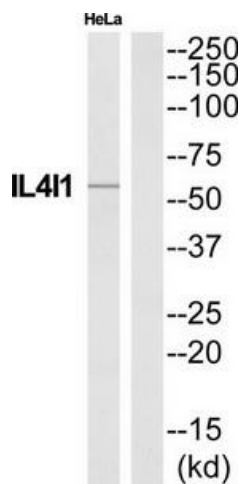
Product Type:	Primary Antibodies
Applications:	WB
Recommended Dilution:	WB: 1:500~1:3000, ELISA: 1:40000
Reactivity:	Human
Host:	Rabbit
Isotype:	IgG
Clonality:	Polyclonal
Immunogen:	The antiserum was produced against synthesized peptide derived from N-terminal of human IL4I1.
Formulation:	Phosphate buffered saline (without Mg ²⁺ and Ca ²⁺), pH 7.4, 150mM NaCl, 0.02% sodium azide and 50% glycerol.
Concentration:	lot specific
Purification:	The antibody was affinity-purified from rabbit antiserum by affinity-chromatography using epitope-specific immunogen.
Conjugation:	Unconjugated
Storage:	Store at -20°C as received.
Stability:	Stable for 12 months from date of receipt.
Gene Name:	interleukin 4 induced 1
Database Link:	NP_758962 Entrez Gene 259307 Human Q96RQ9
Synonyms:	FIG1; LAAO; LAO
Note:	IL4I1 antibody detects endogenous levels of total IL4I1 protein.
Protein Families:	Druggable Genome



[View online »](#)

Protein Pathways:

Alanine, aspartate and glutamate metabolism, Cysteine and methionine metabolism, Metabolic pathways, Phenylalanine, tyrosine and tryptophan biosynthesis, Phenylalanine metabolism, Tryptophan metabolism, Tyrosine metabolism, Valine, leucine and isoleucine degradation

Product images:

Western blot analysis of extracts from HeLa cells, using IL411 antibody. The lane on the right is treated with the synthesized peptide.