

Product datasheet for **TA316280**

TAS2R48 (TAS2R19) Rabbit Polyclonal Antibody

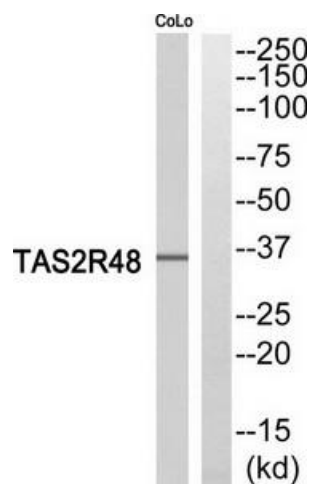
Product data:

Product Type:	Primary Antibodies
Applications:	WB
Recommended Dilution:	WB: 1:500~1:3000, ELISA: 1:20000
Reactivity:	Human
Host:	Rabbit
Isotype:	IgG
Clonality:	Polyclonal
Immunogen:	The antiserum was produced against synthesized peptide derived from internal of human TAS2R48.
Formulation:	Phosphate buffered saline (without Mg ²⁺ and Ca ²⁺), pH 7.4, 150mM NaCl, 0.02% sodium azide and 50% glycerol.
Concentration:	lot specific
Purification:	The antibody was affinity-purified from rabbit antiserum by affinity-chromatography using epitope-specific immunogen.
Conjugation:	Unconjugated
Storage:	Store at -20°C as received.
Stability:	Stable for 12 months from date of receipt.
Gene Name:	taste 2 receptor member 19
Database Link:	NP_795369 Entrez Gene 259294 Human P59542
Synonyms:	MSTP058; T2R19; T2R23; T2R48; TAS2R23; TAS2R48
Note:	TAS2R48 antibody detects endogenous levels of total TAS2R48 protein.
Protein Families:	Transmembrane
Protein Pathways:	Taste transduction



[View online »](#)

Product images:



Western blot analysis of extracts from COLO205 cells, using TAS2R48 antibody. The lane on the right is treated with the synthesized peptide.