

Product datasheet for **TAS16278**

TAS2R39 Rabbit Polyclonal Antibody

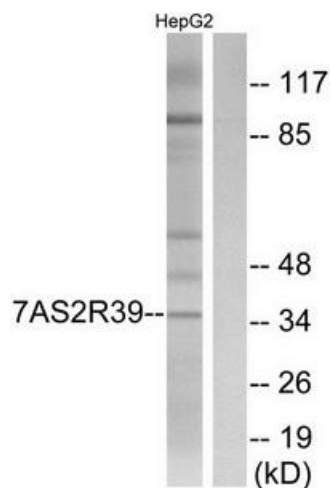
Product data:

Product Type:	Primary Antibodies
Applications:	IF, WB
Recommended Dilution:	WB: 1:500~1:3000, IF: 1:100~1:500, ELISA: 1:10000
Reactivity:	Human
Host:	Rabbit
Isotype:	IgG
Clonality:	Polyclonal
Immunogen:	The antiserum was produced against synthesized peptide derived from internal of human TAS2R39.
Formulation:	Phosphate buffered saline (without Mg ²⁺ and Ca ²⁺), pH 7.4, 150mM NaCl, 0.02% sodium azide and 50% glycerol.
Concentration:	lot specific
Purification:	The antibody was affinity-purified from rabbit antiserum by affinity-chromatography using epitope-specific immunogen.
Conjugation:	Unconjugated
Storage:	Store at -20°C as received.
Stability:	Stable for 12 months from date of receipt.
Gene Name:	taste 2 receptor member 39
Database Link:	NP_795362 Entrez Gene 259285 Human P59534
Synonyms:	T2R39; T2R57
Note:	TAS2R39 antibody detects endogenous levels of total TAS2R39 protein.
Protein Pathways:	Taste transduction

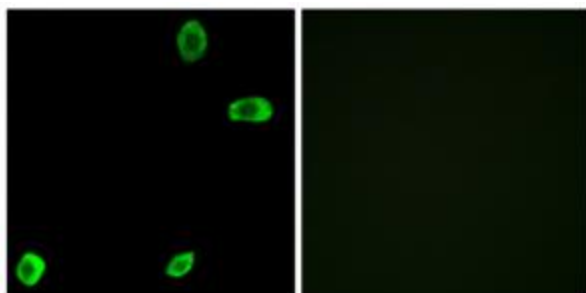


[View online »](#)

Product images:



Western blot analysis of extracts from HepG2 cells, using TAS2R39 antibody. The lane on the right is treated with the synthesized peptide.



Immunofluorescence analysis of A549 cells, using TAS2R39 antibody. The picture on the right is treated with the synthesized peptide.