

## Product datasheet for **TA316277**

### **MRGX1 (MRGPRX1) Rabbit Polyclonal Antibody**

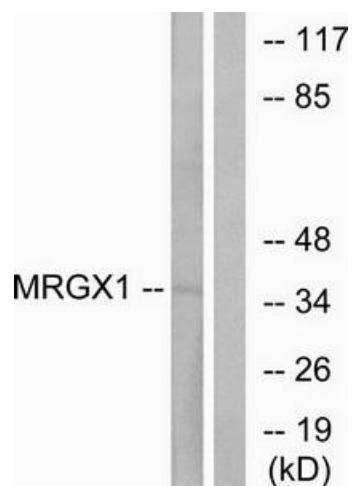
#### **Product data:**

<b>Product Type:</b>	Primary Antibodies
<b>Applications:</b>	IF, WB
<b>Recommended Dilution:</b>	WB: 1:500~1:3000, IF: 1:100~1:500, ELISA: 1:1000
<b>Reactivity:</b>	Human
<b>Host:</b>	Rabbit
<b>Isotype:</b>	IgG
<b>Clonality:</b>	Polyclonal
<b>Immunogen:</b>	The antiserum was produced against synthesized peptide derived from internal of human MRGX1.
<b>Formulation:</b>	Phosphate buffered saline (without Mg <sup>2+</sup> and Ca <sup>2+</sup> ), pH 7.4, 150mM NaCl, 0.02% sodium azide and 50% glycerol.
<b>Concentration:</b>	lot specific
<b>Purification:</b>	The antibody was affinity-purified from rabbit antiserum by affinity-chromatography using epitope-specific immunogen.
<b>Conjugation:</b>	Unconjugated
<b>Storage:</b>	Store at -20°C as received.
<b>Stability:</b>	Stable for 12 months from date of receipt.
<b>Gene Name:</b>	MAS related GPR family member X1
<b>Database Link:</b>	<a href="#">NP_671732</a> <a href="#">Entrez Gene 259249 Human</a> <a href="#">Q96LB2</a>
<b>Synonyms:</b>	GPCR; MGRG2; MRGX1; SNSR4
<b>Note:</b>	MRGX1 antibody detects endogenous levels of total MRGX1 protein.
<b>Protein Families:</b>	Druggable Genome, GPCR, Transmembrane

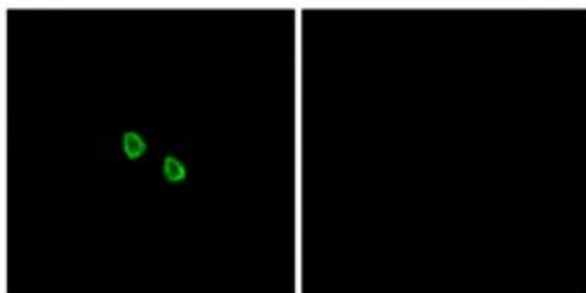


[View online »](#)

## Product images:



Western blot analysis of extracts from MCF-7 cells, using MRGX1 antibody. The lane on the right is treated with the synthesized peptide.



Immunofluorescence analysis of HepG2 cells, using MRGX1 antibody. The picture on the right is treated with the synthesized peptide.