

Product datasheet for **TA316276**

NCR3 Rabbit Polyclonal Antibody

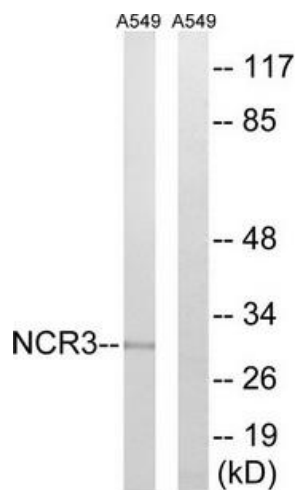
Product data:

Product Type:	Primary Antibodies
Applications:	WB
Recommended Dilution:	WB: 1:500~1:3000, ELISA: 1:40000
Reactivity:	Human, Rat
Host:	Rabbit
Isotype:	IgG
Clonality:	Polyclonal
Immunogen:	The antiserum was produced against synthesized peptide derived from internal of human NCR3.
Formulation:	Phosphate buffered saline (without Mg ²⁺ and Ca ²⁺), pH 7.4, 150mM NaCl, 0.02% sodium azide and 50% glycerol.
Concentration:	lot specific
Purification:	The antibody was affinity-purified from rabbit antiserum by affinity-chromatography using epitope-specific immunogen.
Conjugation:	Unconjugated
Storage:	Store at -20°C as received.
Stability:	Stable for 12 months from date of receipt.
Gene Name:	natural cytotoxicity triggering receptor 3
Database Link:	NP_001138938 Entrez Gene 294251 RatEntrez Gene 259197 Human O14931
Synonyms:	1C7; CD337; LY117; MALS; NKp30
Note:	NCR3 antibody detects endogenous levels of total NCR3 protein.
Protein Families:	Druggable Genome, ES Cell Differentiation/IPS
Protein Pathways:	Natural killer cell mediated cytotoxicity



[View online »](#)

Product images:



Western blot analysis of extracts from A549 cells, using NCR3 antibody. The lane on the right is treated with the synthesized peptide.